

WAAS

CH **56246**

W16A

APP CRS

159°

Rwy Idg

8800

TDZE

1287

Apt Elev

1288

RNAV (GPS) RWY 16L

NORTHWEST ARKANSAS NTL (XNA)

RNP APCH - GPS.

▼

▲

For uncompensated Baro-VNAV systems, LNAV/VNAV NA below -15°C or above 54°C. For inop ALS, increase LPV Cat E visibility to RVR 4000, LNAV/VNAV Cat E visibility to 1¼ SM and LNAV Cats C, D, and E visibility to 1½ SM. *RVR 1800 authorized with use of FD or AP or HUD to DA.

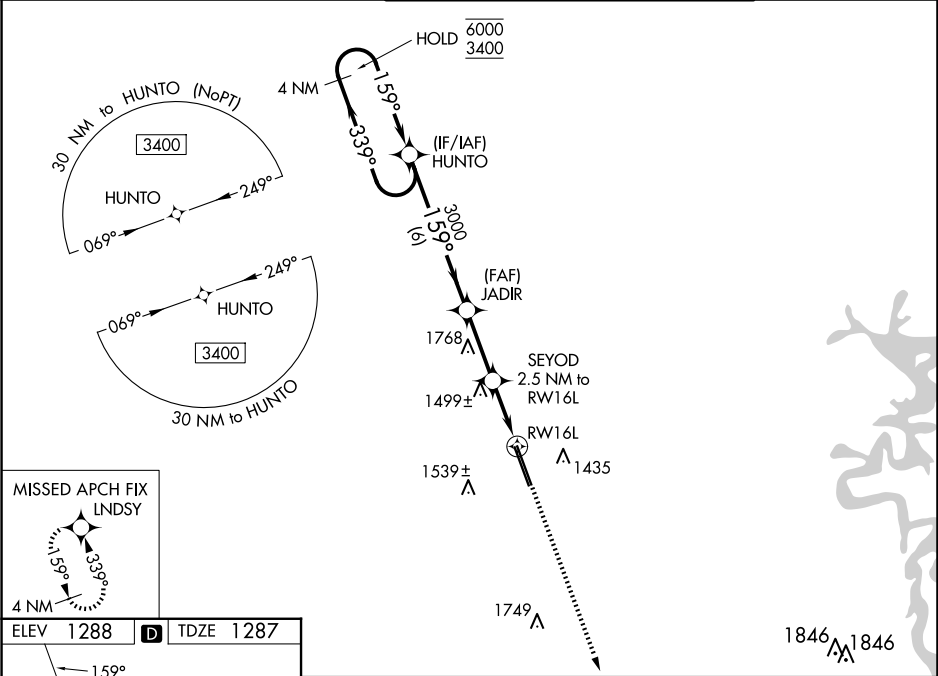
MALSR

AS

MISSED APPROACH:

Climb to 3400 direct LNDY and hold.

ATIS	RAZORBACK APP CON *	NORTHWEST ARKANSAS NTL TOWER *	GND CON
119.425	121.0 244.575	127.1 (CTAF) 0	121.9



ELEV **1288**

D

TDZE **1287**

HIRL Rwy 16L-34R **0**

MIRL Rwy 16R-34L

4 NM Holding Pattern		VGSI and RNAV glidepath not coincident (VGSI Angle 3.00/TCH 52).		3400	LNDY
GP 3.00° TCH 57		6 NM		2.7 NM	1.2 1.3
CATEGORY	A	B	C	D	E
LPV DA*	1487/24		200 (200-½)		
LNAV/VNAV DA	1710/40		423 (500-¾)		
LNAV MDA	1760/24	473 (500-½)		1760/50 473 (500-1)	
CIRCLING	1760-1	472 (500-1)		2040-2¼ 752 (800-2¼)	2080-2½ 792 (800-2½) 2080-2¾ 792 (800-2¾)

SC-1, 07 AUG 2025 to 04 SEP 2025

SC-1, 07 AUG 2025 to 04 SEP 2025