

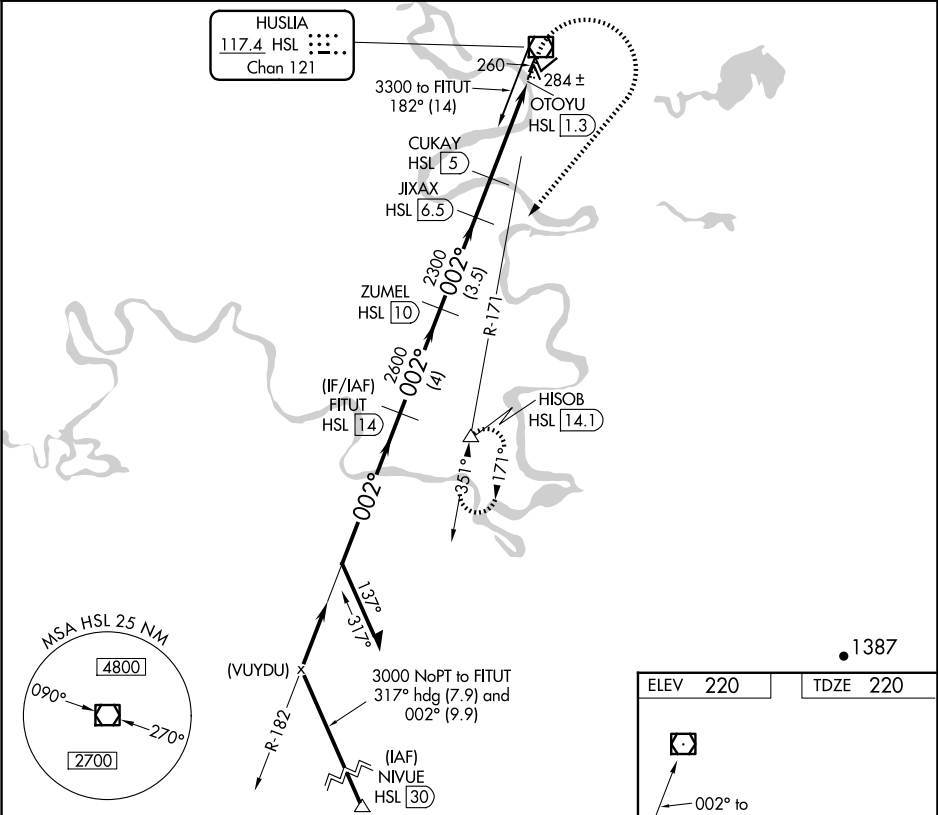
VOR/DME HSL	APP CRS	Rwy Idg	4000
117.4	002°	TDZE	220
Chan 121		Apt Elev	220

VOR/DME RWY 3

HUSLIA (HLA)(PAHL)

Helicopter visibility reduction below ¾ SM NA.	MISSED APPROACH: Climb to 700 then climbing right turn to 3000 on heading 201° and HSL R-171 to HISOB/14.1 DME and hold.
--	--

AWOS-3P 135.75	ANCHORAGE CENTER 127.0 290.2	FAIRBANKS RADIO 122.4	UNICOM 122.8 (CTAF) 0
-------------------	---------------------------------	--------------------------	--------------------------



CATEGORY	A		B		C		D	
	S-3		540-1		320 (400-1)			
CIRCLING	600-1		680-1		680-1½		780-2	
	380 (400-1)		460 (500-1)		460 (500-1½)		560 (600-2)	

