

HUSLIA, ALASKA

AL-9273 (FAA)

19283

WAAS CH 61108 W21A	APP CRS 212°	Rwy Idg 4000 TDZE 217 Apt Elev 220
--	------------------------	---

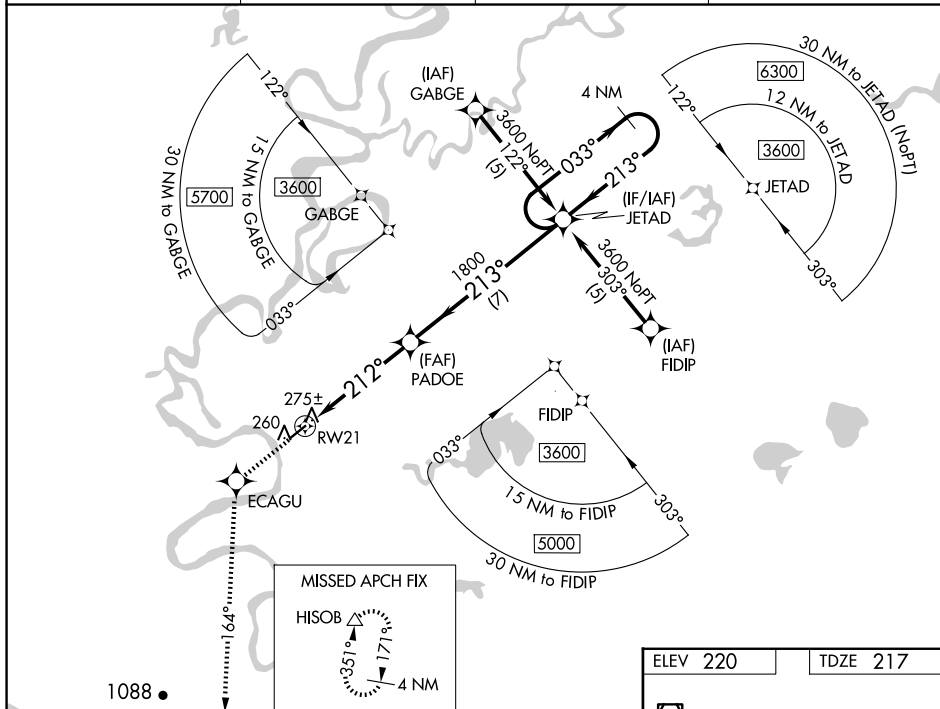
RNAV (GPS) RWY 21

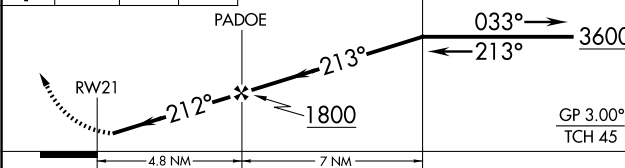
HUSLIA(HLA)(PAHL)

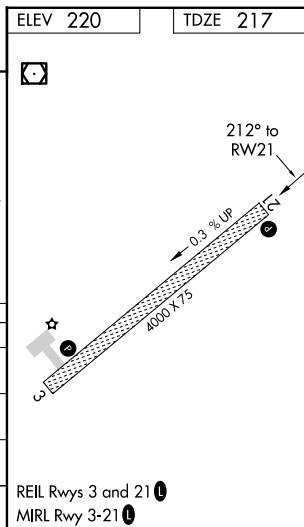
T For uncompensated Baro-VNAV systems, LNAV/VNAV NA below -25°C (-13°F) or above 48°C (118°F). Helicopter visibility reduction below $\frac{3}{4}$ SM NA. DME/DME RNP-0.3 NA.

MISSED APPROACH: Climb to 3000 direct ECAGU and via 164° track to HISOB and hold.

AWOS-3P 135.75	ANCHORAGE CENTER 127.0 290.2	FAIRBANKS RADIO 122.4	UNICOM 122.8 (CTAF) ①
--------------------------	--	---------------------------------	---------------------------------



3000 ↑	ECAGU ✱	tr 164°	HISOB △	VGSi and RNAV glidepath not coincident (VGSi Angle 3.00/TCH 25).					
				4 NM Holding Pattern 033° → 3600 ← 213° GP 3.00° TCH 45					
CATEGORY		A		B		C		D	
LPV	DA	517-1 300 (300-1)							
LNAV/ VNAV	DA	549-1¼ 332 (400-1¼)							
LNAV	MDA	540-1 323 (400-1)							
CIRCLING		600-1 380 (400-1)		680-1 460 (500-1)		680-1½ 460 (500-1½)		780-2 560 (600-2)	



HUSLIA, ALASKA
Amdt 2A 06FEB14

65°42'N-156°21'W

HUSUA(HLA)(PAHL)

RNAV (GPS) RWY 21

AK, 07 AUG 2025 to 02 OCT 2025

AK, 07 AUG 2025 to 02 OCT 2025