

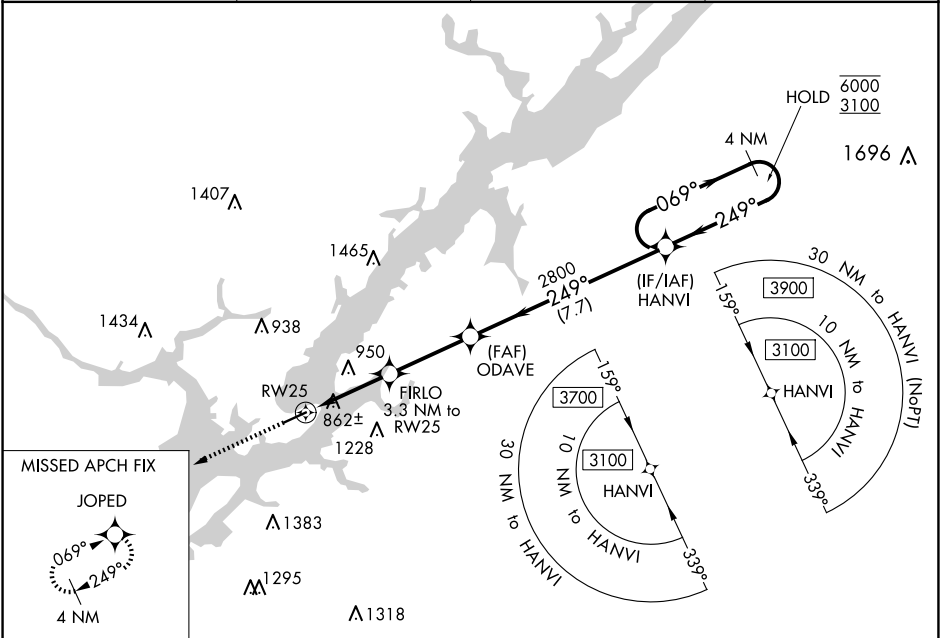
WAAS CH 93640 W25A	APP CRS 249°	Rwy Idg TDZE 615 Apt Elev 615	5005
--	------------------------	---	-------------

RNAV (GPS) RWY 25

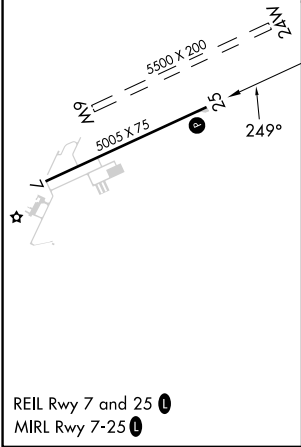
GUNTERSVILLE MUNI/JOE STARNES FLD (8A1)

RNP APCH.	MISSED APPROACH: Climb to 3000 direct JOPED and hold.
NA Circling NA to Rwy 6 and 24. Circling Rwy 7 NA at night. Rwy 25 helicopter visibility reduction below ¾ SM NA. Baro-VNAV NA. Use Scottsboro altimeter setting.	

AWOS-3PT 121.125	4A6 AWOS-3PT 120.125	HUNTSVILLE APP CON ★ 125.6 354.1	UNICOM 122.8 (CTAF) 0
----------------------------	--------------------------------	--	---------------------------------



ELEV 615	TDZE 615
----------	----------



3000	JOPED	VGSI and RNAV glidepath not coincident (VGSI angle 3.35/TCH 50).		4 NM Holding Pattern
*LNAV only.	FIRLO 3.3 NM to RW25	ODAVE 2800	HANVI	6000 3100
RW25	1740*	2800	249°	GP 3.10° TCH 50
3.3 NM	3.2 NM	7.7 NM		
CATEGORY	A	B	C	D
LPV DA	1026-1⅜ 411 (500-1⅜)			
LNAV/VNAV DA	1224-2 609 (700-2)			
LNAV MDA	1260-1	645 (700-1)	1260-2	645 (700-2)
CIRCLING	1360-1 745 (800-1)	1380-1 765 (800-1)	1620-3 1005 (1100-3)	1840-3 1225 (1300-3)