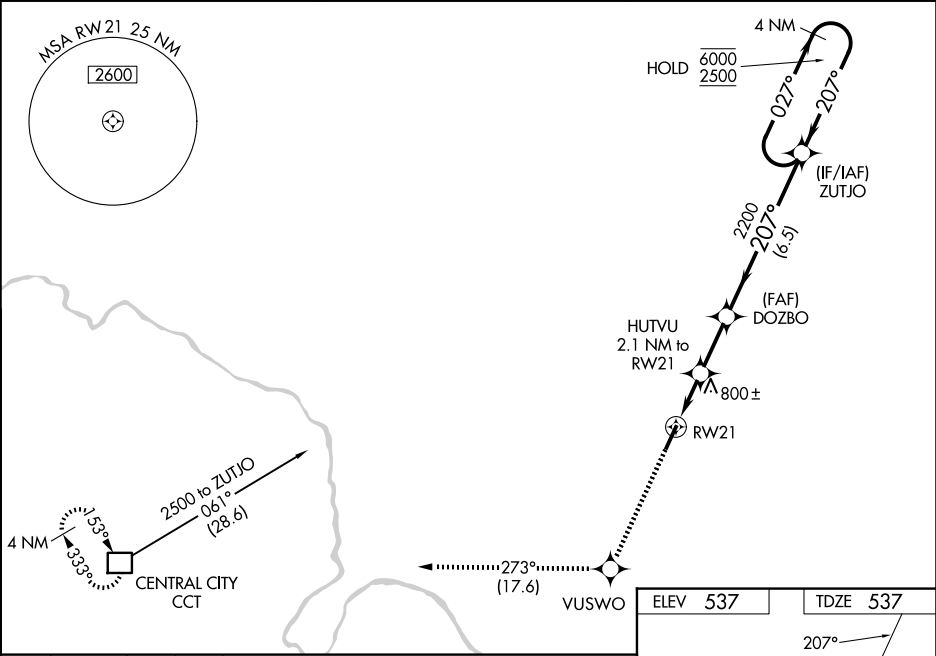


WAAS CH 90526 W21A	APP CRS 207°	Rwy Ldg TDZE Apt Elev	5003 537 537
--	------------------------	-----------------------------	---

RNAV (GPS) RWY 21

OHIO COUNTY (JQD)

RNP APCH - GPS.		MISSED APPROACH: Climb to 3000 direct VUSWO and on track 273° to CCT DME and hold.
Baro-VNAV NA when using Owensboro altimeter setting. For uncompensated Baro-VNAV systems, LNAV/VNAV NA below -16°C or above 54°C. When local altimeter setting not received, use Owensboro altimeter setting and increase LPV DA to 858 feet, increase LNAV/VNAV DA to 1082 feet. Increase all MDA 80 feet, increase LNAV/VNAV visibilities all Cats ¼ SM, increase LNAV and Circling Cat C visibility ¼ SM. Rwy 21 helicopter visibility reduction below 1 SM NA. Procedure NA at night.		
AWOS-3PT 132.1	EVANSVILLE APP CON ★ 124.025 290.9	UNICOM 122.8 (CTAF) 0



3000 VUSWO		CCT	
↑		tr 273°	
*LNAV only.		HUTVU 2.1 NM to RW21	
RW21		DOZBO 2200	
*1360		2200	
2.1 NM		2.3 NM	
		6.5 NM	
CATEGORY	A	B	C
LPV DA	787-1	250 (300-1)	807-1
LNAV/VNAV DA	1011-1 3/8	474 (500-1 3/8)	523 (600-1 1/2)
LNAV MDA	1060-1	523 (600-1)	1060-1 1/2
CIRCLING	1060-1	1100-1	1300-2 1/4
	523 (600-1)	563 (600-1)	763 (800-2 1/4)

ELEV 537	TDZE 537
207°	
3003 x 75	
MIRL Rwy 3-21 0	
REIL Rwy 3 and 21	