

WAAS  
CH **73010**  
**W09A**

APP CRS  
**091°**

Rwy Ldg  
TDZE **3669**  
Apt Elev **3703**

**RNAV (GPS) Z RWY 9**

GRANT COUNTY RGNL/OGILVIE FLD (GCD)

RNP APCH - GPS.

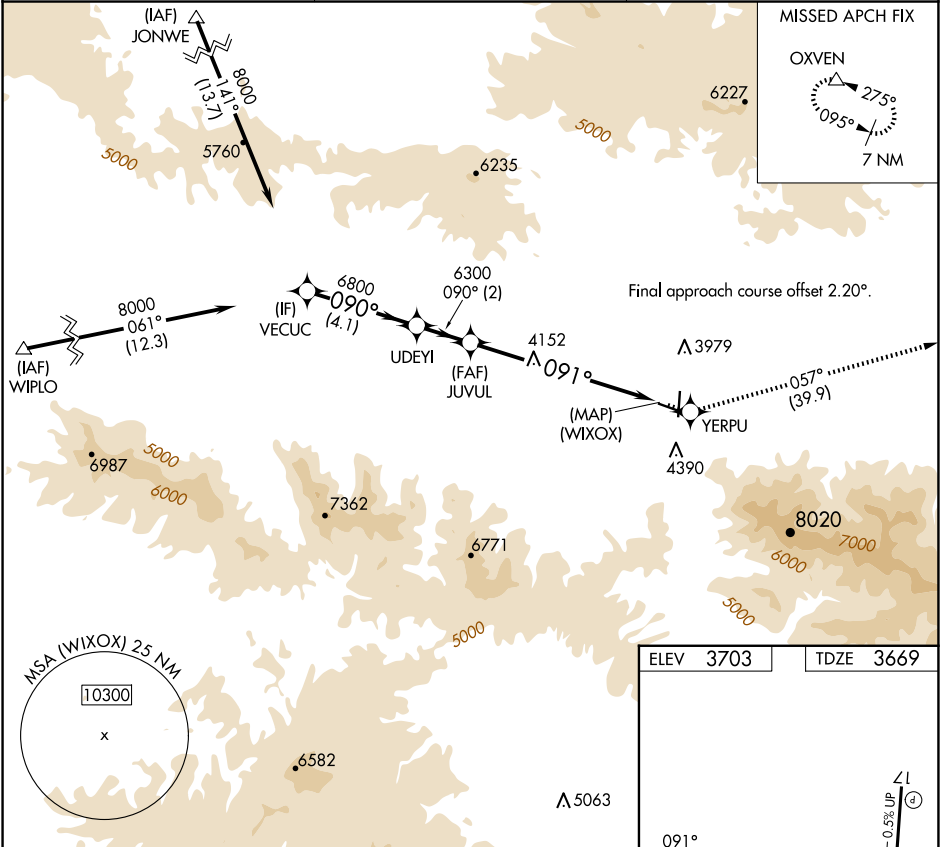
When local altimeter setting not received, procedure NA.  
Rwy 9 helicopter visibility reduction below 3/4 SM NA.

MISSED APPROACH: Climb to 12000 direct YERPU and on track 057° to OXVEN and hold, continue climb-in-hold to 12000.

AWOS-3  
**118.375**

SEATTLE CENTER  
**128.15 257.75**

UNICOM  
**122.8 (CTAF) 0**



VEUCU

8000

090°

6800

GP 3.40° TCH 54

4.1 NM

A

UDEYI

2 NM

B

JUVUL

6300

091°

7.1 NM

C

12000

YERPU

057°

OXVEN

VGSI and RNAV glidepath not coincident (VGSI Angle 3.00/TCH 45).

(WIXOX)

4100 X 60

1.0% UP

091°

0.5% UP

5224 X 60

35

27

41

REIL Rwy 17 and 9

MRL Rwy 9-27 and 17-35

CATEGORY

LPV DA

269-2

600 (600-2)

NA