

APP CRS	Rwy Ldg	4100
083°	TDZE	3669
	Apt Elev	3703

RNAV (GPS) Y RWY 9

GRANT COUNTY RGNL/OGILVIE FLD (GCD)

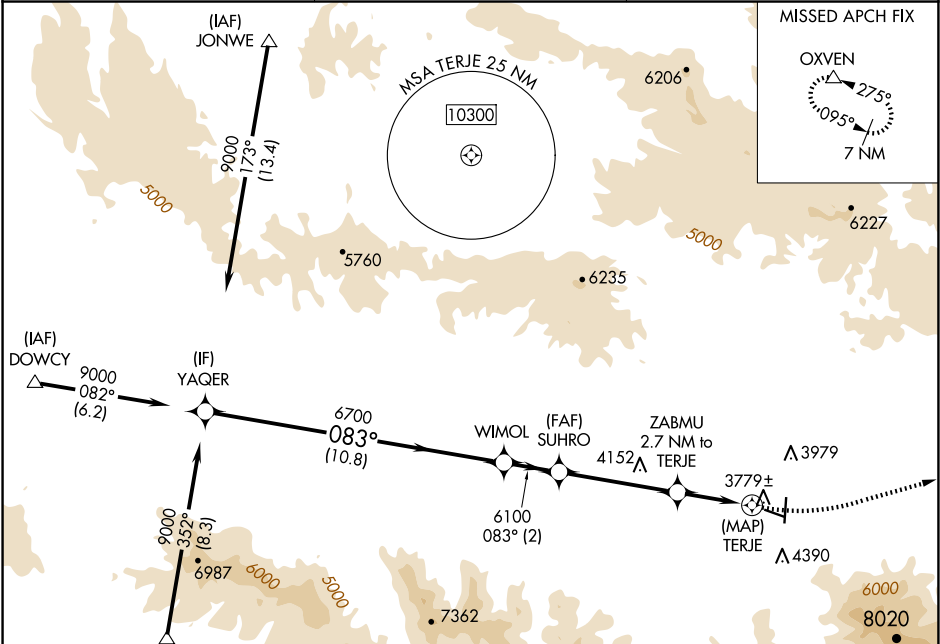
▼

▲

When local altimeter setting not received, procedure NA.
Circling NA south of Rwy 9-27. DME/DME RNP-0.3 NA.
Helicopter visibility reduction below ¾ SM not authorized.

MISSED APPROACH: Climbing left turn to 12000 direct
OXVEN and hold, continue climb-in-hold to 12000.

AWOS-3 118.375	SEATTLE CENTER 128.15 257.75	UNICOM 122.8 (CTAF) 0
-------------------	---------------------------------	--------------------------



ELEV 3703	TDZE 3669
-----------	-----------

Procedure Turn NA

9000 083° 6700 6100 4700

10.8 NM 2 NM 4.3 NM 2.7 NM 0.5

TERJE

OXVEN

083°

1.0° UP

4100 X 60

5224 X 60

35

VGSI and descent angles not coincident (VGSI Angle 3.00/TCH 45).

3.03° TCH 40

2.7 NM to TERJE

TERJE

OXVEN

083°

1.0° UP

4100 X 60

5224 X 60

35

CATEGORY	A	B	C	D
LNNAV MDA	4280-1 611 (600-1)	4280-1¾ 611 (600-1¾)	4280-1¾ 611 (600-1¾)	NA
CIRCLING	4280-1 577 (600-1)	4520-1¼ 817 (900-1¼)	5160-3 1457 (1500-3)	NA

REIL Rwy 17 and 9 0
MIRL Rwy 9-27 and 17-35 0