

| | | |
|--|------------------------|---|
| WAAS CH 97636 W14A | APP CRS 148° | Rwy Idg 3296 TDZE 1242 Apt Elev 1242 |
|--|------------------------|---|

RNAV (GPS) RWY 14

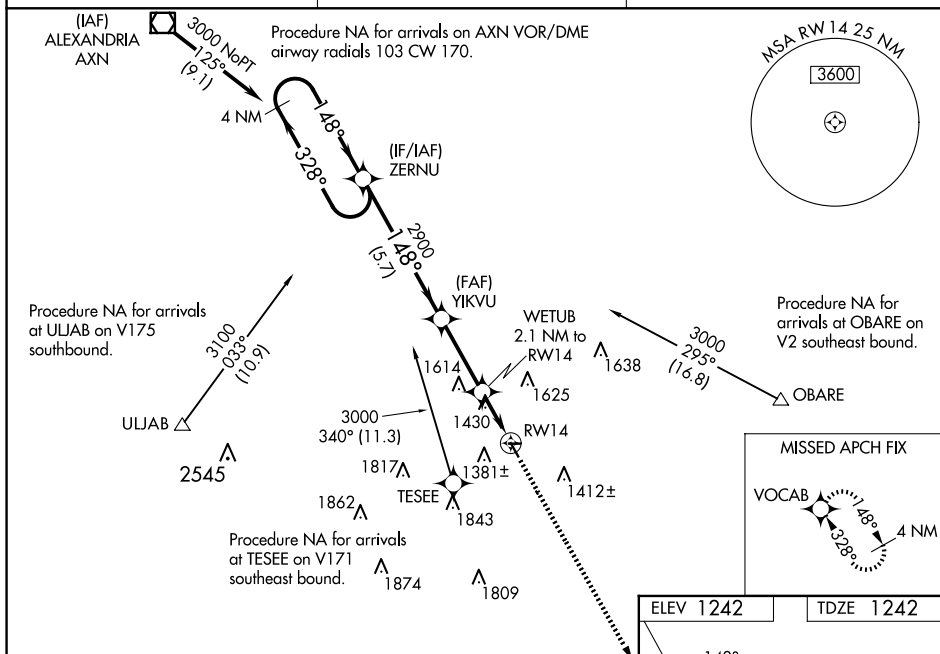
SAUK CENTRE MUNI (D39)

RNP APCH -GPS.

T Baro-VNAV NA when using Glenwood altimeter setting. For uncompensated Baro-VNAV systems, LNAV/VNAV NA below -17°C or above 54°C. VDP NA with Glenwood altimeter setting. When local altimeter setting not received, use Glenwood altimeter setting and increase all DA/MDA 60 feet, increase LNAV/VNAV all Cats visibility ½ mile. Rwy 14 helicopter visibility reduction below ¾ SM NA. Circling NA to Rwy's 8 and 26.

MISSED APPROACH:
Climb to 3000 direct
VOCAB and hold.

| | | |
|--------------------------|--|-----------------------|
| AWOS-3 118.475 | MINNEAPOLIS CENTER 126.1 269.2 | CTAF 122.90 |
|--------------------------|--|-----------------------|



4 NM Holding Pattern

ZERNU

YIKVU

WETUB 2.1 NM to RW14

3000

328°

148°

2900

GP 3.00° TCH 40

*1940


*1.3 NM to RW14

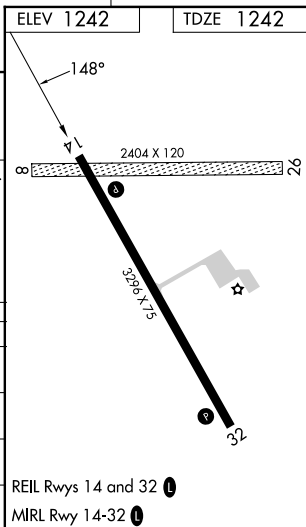
VGSB and RNAV glidepath not coincident (VGSB Angle 3.00/TCH 23).

3000

VGSB

*RNAV only

| CATEGORY | | A | B | C | D |
|--|-----|-----------------------|-----------------------|----|---|
| LPV | DA | 1492-1 | 250 (300-1) | NA | |
| LNAV/ VNAV | DA | 1500-1 | 258 (300-1) | NA | |
| LNAV | MDA | 1680-1 | 438 (500-1) | NA | |
|  CIRCLING | | 1700-1 458 (500-1) | 1740-1 498 (500-1) | NA | |



RNAV (GPS) RWY 14