

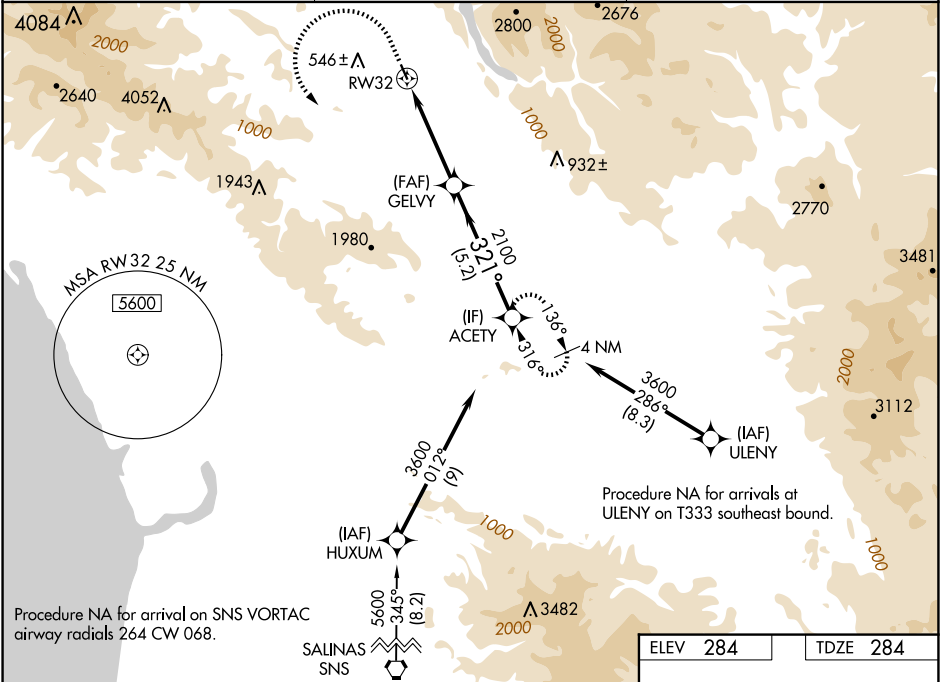
WAAS CH 56444 W32A	APP CRS 321°	Rwy Idg TDZE 284 Apt Elev 284	3095
--	------------------------	---	-------------





RNAV (GPS) RWY 32

SAN MARTIN (E16)

RNP APCH - GPS.	MISSED APPROACH: Climb to 2400 then climbing left turn to 3600 direct ACETY and hold. *Missed approach requires minimum climb of 260 feet per NM to 2400.
<div><div></div><div>Circling NA southwest of Rwy 14-32. Rwy 32 helicopter visibility reduction below ¾ SM NA.</div></div>	

AWOS-3P 118.35	NORCAL APP CON 124.525 348.675	UNICOM 122.7 (CTAF) ①
--------------------------	--	---------------------------------



2400	3600	ACETY				
						
CATEGORY	A		B		C	D
LPV DA*	600-7 ⁷ / ₈		316 (400-7 ⁷ / ₈)		NA	
LPV DA	954-17 ⁷ / ₈		670 (700-17 ⁷ / ₈)		NA	
LNAV MDA*	1060-1 776 (800-1)		1060-1 ¹ / ₄ 776 (800-1 ¹ / ₄)		NA	
LNAV MDA	1320-1 ¹ / ₄ 1036 (1100-1 ¹ / ₄)		1320-1 ¹ / ₂ 1036 (1100-1 ¹ / ₂)		NA	
 CIRCLING	1320-1 ¹ / ₄ 1036 (1100-1 ¹ / ₄)		1320-1 ¹ / ₂ 1036 (1100-1 ¹ / ₂)		NA	

