

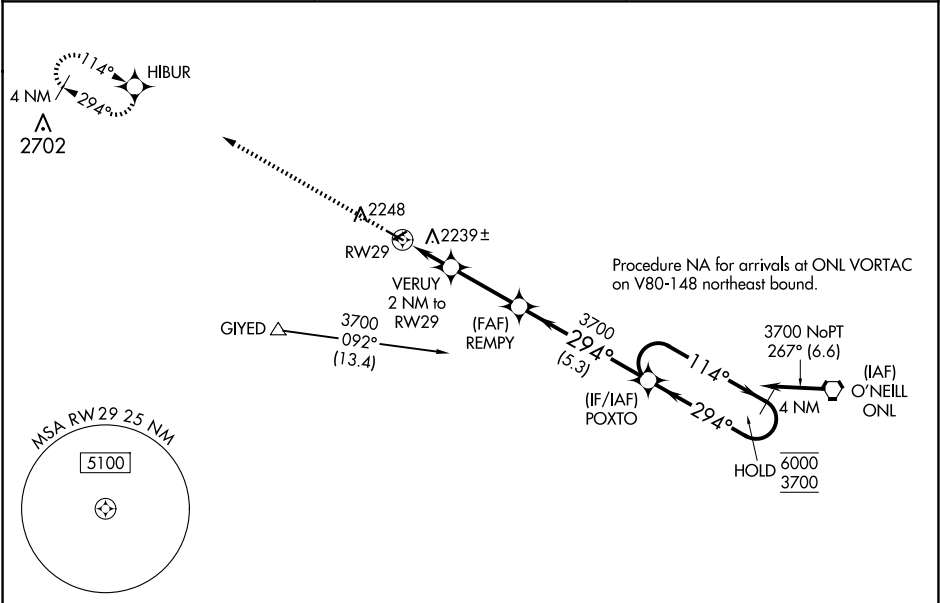
WAAS CH 53627 W29A	APP CRS 294°	Rwy Idg TDZE Apt Elev	3900 2130 2131
--	------------------------	-----------------------------	---

RNAV (GPS) RWY 29

STUART-ATKINSON MUNI (8V2)

RNP APCH - GPS.	MISSED APPROACH: Climb to 3900 direct HIBUR and hold.
Baro-VNAV NA. Circling NA to Rwy's 5 and 23. Use ONL altimeter setting; when not received, use ANW altimeter setting and increase LPV DA to 2538 feet and all visibilities to 1 3⁄8 SM, LNAV/VNAV DA to 2563 feet and all visibilities to 1 1⁄2 SM, increase all MDAs 120 feet.	

ONL AWOS-3 121.125	MINNEAPOLIS CENTER 128.0 257.95	CTAF 122.9 0
------------------------------	---	------------------------



ELEV 2131	TDZE 2130
-----------	-----------

