

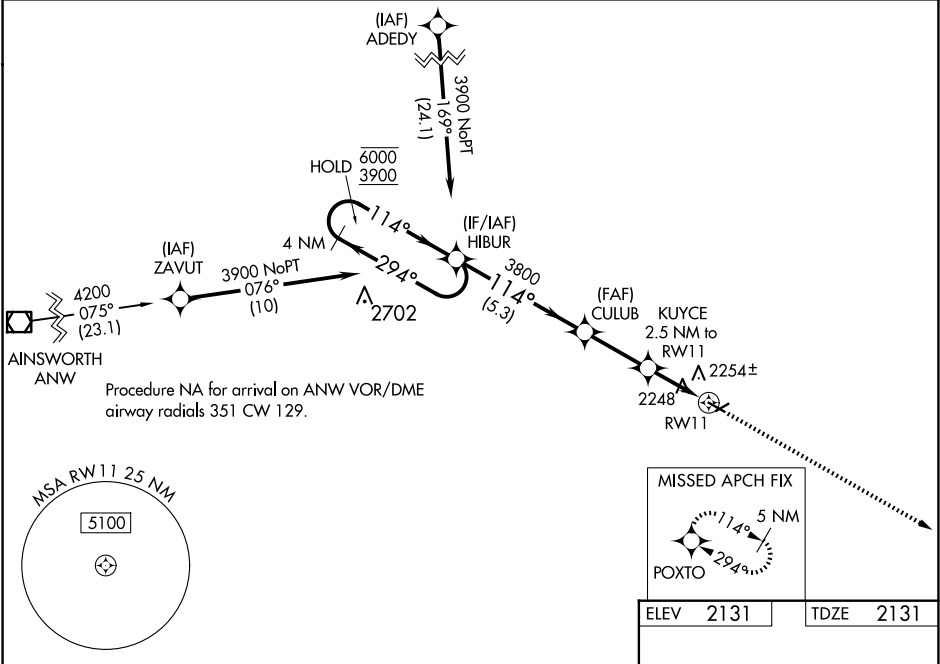
WAAS CH 69427 W11A	APP CRS 114°	Rwy Idg TDZE 2131 Apt Elev 2131
--	------------------------	---

RNAV (GPS) RWY 11

STUART-ATKINSON MUNI (8V2)

RNP APCH.	<p>NA Circling NA to Rwy 5 and 23. Baro-VNAV NA. Use O'Neill altimeter setting; when not received, use Ainsworth altimeter setting: increase LPV DA to 2547 feet and visibility all Cats to 1½ SM; increase LNAV/VNAV DA to 2691 feet and visibility all Cats to 1½ SM; increase all MDA 120 feet.</p>	MISSED APPROACH: Climb to 5000 direct POXTO and hold, continue climb-in-hold to 5000.
-----------	---	---

ONL AWOS-3 121.125	MINNEAPOLIS CENTER 128.0 257.95	CTAF 122.9 0
------------------------------	---	------------------------



4 NM Holding Pattern		HIBUR	CULUB	KUYCE 2.5 NM to RW11	RW11
6000 3900		294° 114°	114° 3800	*2960	
GP 3.00° TCH 40			5.3 NM	2.6 NM	2.5 NM
CATEGORY	A	B	C	D	
LPV DA	2433-1	302 (400-1)	NA	NA	
LNAV/VNAV DA	2577-1⅜	446 (500-1⅜)	NA	NA	
LNAV MDA	2560-1	429 (500-1)	NA	NA	
CIRCLING	2620-1 489 (500-1)	2640-1 509 (600-1)	NA	NA	

5000 POXTO

*LNAV only

114°

3900 X 60

2970 X 100

5

29

ELEV 2131

TDZE 2131

MIRL Rwy 11-29 0

REIL Rwy 11 and 29 0