

LOC I-CPF  
**109.35**

APP CRS  
**145°**

Rwy Idg **5499**  
TDZE **1243**  
Apt Elev **1256**

LOC RWY 14  
WENDELL H FORD (CPF')

DME required. RADAR required for procedure entry.  
RADAR required for missed approach.

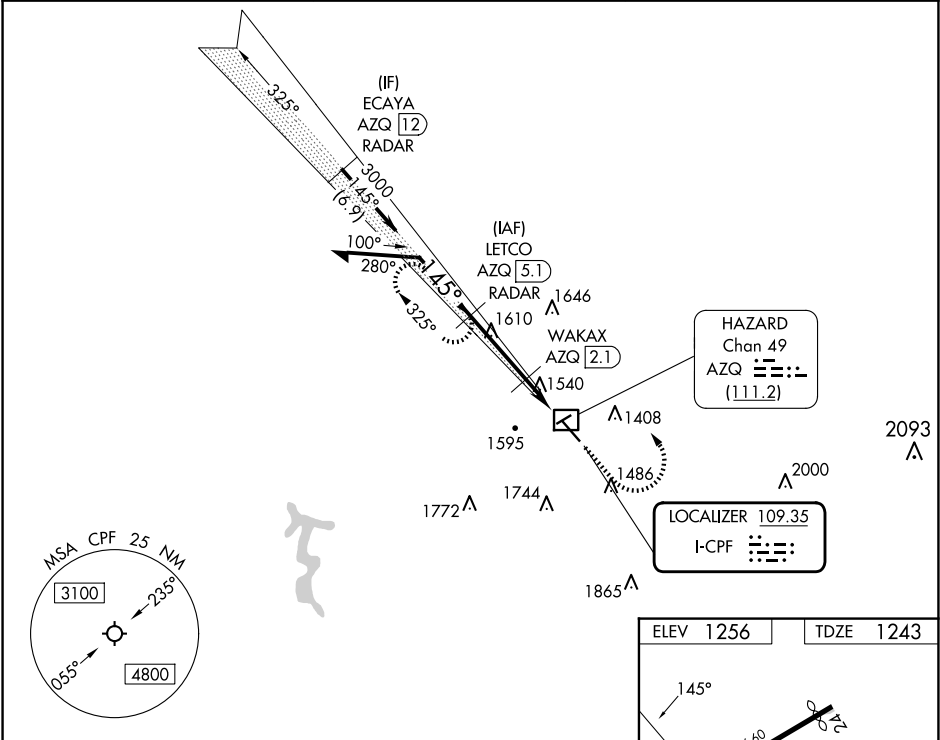
MISSED APPROACH: Climb to 2500 then climbing left turn to 4000 to LETCO/AZQ 5.1 DME/RADAR and hold, continue climb-in-hold to 4000.

⚠ Circling Rwy 24, 32 NA at night. Simultaneous reception of I-CPF and AZQ DME required. Rwy 14 helicopter visibility reduction below ¾ SM NA. DME from AZQ DME.

AWOS-3  
**119.025**

INDIANAPOLIS CENTER  
**126.575 257.85**

UNICOM  
**122.7 (CTAF) 0**



Remain within 10 NM

LETCO AZQ [5.1] RADAR

WAKAX AZQ [2.1]

2500 4000 LETCO AZQ [5.1] RADAR

VGSI and descent angles not coincident (VGSI Angle 3.29/TCH 51).

4000 3000 1660 1960

3.22° TCH 40

3 NM 2 NM

ELEV 1256 TDZE 1243

145°

3246 X 60

5499 X 100

MIRL Rwy 14-32 1

REIL Rws 14 and 32 1

FAF to MAP 5 NM

Knots	60	90	120	150	180
Min:Seq	5:00	3:20	2:30	2:00	1:40

CATEGORY	A	B	C	D
S-LOC 14	1800-1	557 (600-1)	1800-1½	557 (600-1½)
CIRCLING	2000-1 744 (800-1)	2040-1 784 (800-1)	2060-2¼ 804 (900-2¼)	2140-3 884 (900-3)