

WAAS CH 63233 W35A	APP CRS 359°	Rwy Ldg 5010 TDZE 990 Apt Elev 1010
--	------------------------	--

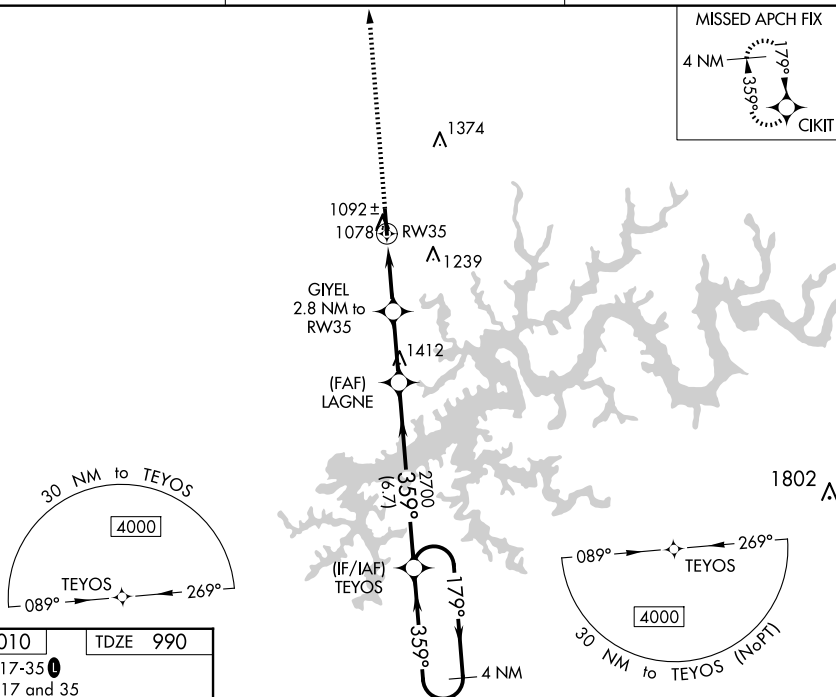
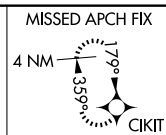
RNAV (GPS) RWY 35

RUSSELL COUNTY (K24)

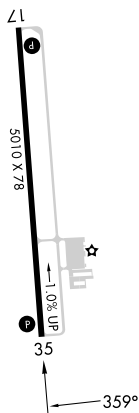
<div style="display: flex; align-items: center;"> <div style="width: 15px; height: 15px; background-color: black; margin-right: 5px;"></div> <div style="font-size: 10px; font-weight: bold;">NA</div> </div>	<p>For uncompensated Baro-VNAV systems, LNAV/VNAV NA below -17°C (2°F) or above 54°C (130°F). DME/DME RNP-0.3 NA. Baro-VNAV and VDP NA when using Wayne County altimeter setting. When local altimeter setting not received, use Wayne County altimeter setting and increase all DA 42 feet and all MDA 60 feet. Increase LPV all Cats visibility ¼ mile and LNAV/VNAV all Cats visibility ½ mile and LNAV and Circling Cat C/D visibility ¼ mile. Helicopter visibility reduction below ¾ mile NA.</p>
---	---

MISSED APPROACH:
Climb to 4000 direct
CIKIT and hold.

AWOS-3 119.6	INDIANAPOLIS CENTER 124.625 371.925	UNICOM 123.0 (CTAF) 0
------------------------	---	---------------------------------



ELEV 1010	TDZE 990
MIRL Rwy 17-35 L	
REIL Rwys 17 and 35	



*** RNAV only**

4 NM Holding Pattern

GP 3.00° TCH 39°

CATEGORY	A	B	C	D
LPV DA	1240- $\frac{7}{8}$	250 (300- $\frac{7}{8}$)		
LNAV/VNAV DA	1285- $1\frac{1}{8}$	295 (300- $1\frac{1}{8}$)		
LNAV MDA	1360-1	370 (400-1)		
C CIRCLING	1540-1 530 (600-1)	1620-1 610 (700-1)	1700-2 690 (700-2)	1700- $2\frac{1}{4}$ 690 (700- $2\frac{1}{4}$)