

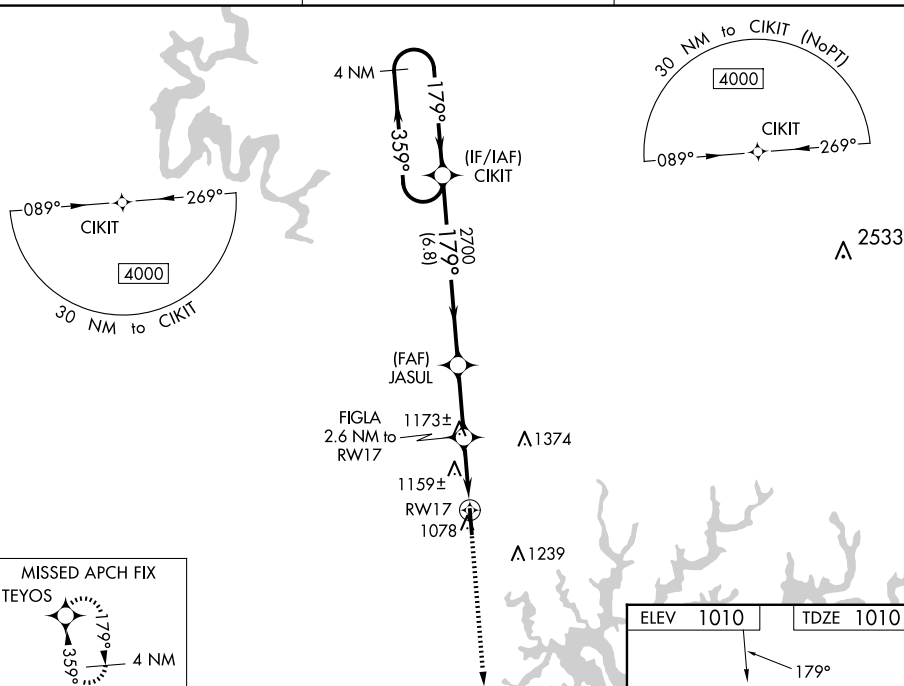
WAAS CH 78433 W17A	APP CRS 179°	Rwy Ldg 5010 TDZE 1010 Apt Elev 1010
--	------------------------	---

RNAV (GPS) RWY 17
RUSSELL COUNTY (K24)

NA Baro-VNAV NA when using Wayne County altimeter setting. For uncompensated Baro-VNAV systems, LNAV/VNAV NA below -17°C (2°F) or above 54°C (130°F). When local altimeter setting not received, use Wayne County altimeter setting increase all DA 42 feet and increase all MDA 60 feet; increase LPV all Cats ½ mile; LNAV/VNAV all Cats ¼ mile and LNAV and Circling Cats C/D visibility ¼ mile. DME/DME RNP-0.3 NA. Helicopter visibility reduction below ¾ SM NA.

MISSED APPROACH:
Climb to 4000 direct
TEYOS and hold.

AWOS-3 119.6	INDIANAPOLIS CENTER 124.625 371.925	UNICOM 123.0 (CTAF) 0
------------------------	---	---------------------------------



4 NM Holding Pattern

CIKIT

JASUL 2700

FIGLA 2.6 NM to RW17

RW17

$\leftarrow 359^\circ$

$\rightarrow 179^\circ$

$\nwarrow 179^\circ$

$\nearrow 2700$

*1860

GP 3.00° TCH 37

6.8 NM 2.6 NM 2.6 NM

CATEGORY	A	B	C	D
LPV DA		1346-1 $\frac{1}{8}$	336 (400-1 $\frac{1}{8}$)	
LNAV/VNAV DA		1424-1 $\frac{3}{8}$	414 (500-1 $\frac{3}{8}$)	
LNAV MDA	1420-1	410 (500-1)	1420-1 $\frac{1}{8}$	410 (500-1 $\frac{1}{8}$)
C CIRCLING	1540-1 530 (600-1)	1620-1 610 (700-1)	1700-2 690 (700-2)	1700-2 $\frac{1}{4}$ 690 (700-2 $\frac{1}{4}$)

4000 TEYOS

* LNAV only

