

WAAS CH 40125 W31A	APP CRS 315°	Rwy Idg 5500 TDZE 814 Apt Elev 814
--	------------------------	---

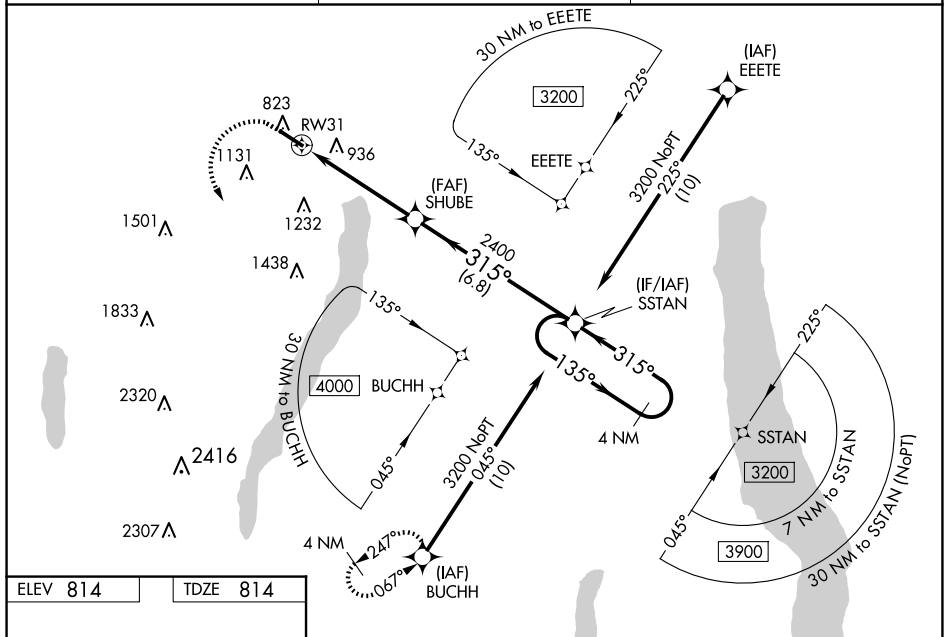
RNAV (GPS) RWY 31
CANANDAIGUA (TUA)

RNP APCH-GPS.

NA For uncompensated Baro-VNAV systems, LNAV/VNAV NA below -16°C or above 54°C. When local altimeter setting not received, use ROC altimeter setting and increase LPV DA to 1146 feet and all visibilities $\frac{1}{4}$ SM. Increase LNAV/VNAV DA to 1328 feet and all visibilities $\frac{1}{8}$ SM. Increase all MDAs 100 feet and LNAV visibility Cat C $\frac{3}{8}$ SM, and Circling visibility Cat C $\frac{1}{2}$ SM. Rwy 31 helicopter visibility reduction below $\frac{3}{4}$ SM NA. Baro-VNAV and VDP NA when using ROC altimeter setting.

MISSED APPROACH:
Climb to 1400 then
climbing left turn to
3700 direct BUCHH
and hold.

AWOS-3P 118,675	ROCHESTER APP CON 119.55 269.6	UNICOM 122.8 (CTAF) 0
---------------------------	--	---------------------------------



MIRL Rwy 13-31
REIL Rwy 13 and 31

5500 X 100
0.4% UP
315°

4 NM Holding Pattern

1.4 NM to RW31
RW31

1.4 NM to SHUBE 2400
SHUBE 2400

135°
315°

3200
2400

GP 3.00°
TCH 40

CATEGORY	A	B	C	D
LPV DA	1064-1	250 (300-1)		NA
LNAV/VNAV DA	1246-1¼	432 (500-1¼)		NA
LNAV MDA	1300-1	486 (500-1)	1300-1⅜ 486 (500-1⅜)	NA
C CIRCLING	1460-1	646 (700-1)	1540-2 726 (800-2)	NA