

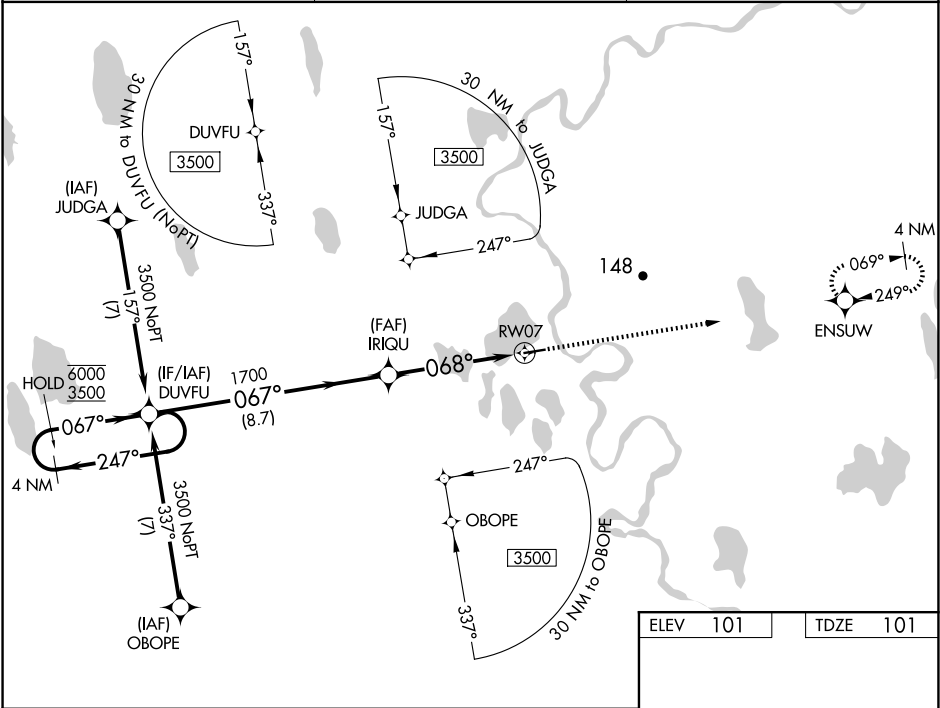
WAAS CH 93743 W07A	APP CRS 068°	Rwy Idg TDZE 101 Apt Elev 101	4370
--	------------------------	---	-------------

RNAV (GPS) RWY 7

ATQASUK EDWARD BURNELL SR MEML (ATK)(PATQ)

RNP APCH.	MISSED APPROACH: Climb to 3500 direct ENSUW and hold, continue climb-in-hold to 3500.
<div>For uncompensated Baro-VNAV systems, LNAV/VNAV NA below -22°C or above 54°C.</div>	

AWOS-3P 119.925	ANCHORAGE CENTER 135.3 239.25	CTAF 122.9
---------------------------	---	----------------------



4 NM Holding Pattern		DUVFU	*LNAV only.	3500	ENSUW
6000 ← 247°		067° →	067°	1700	*1.2 NM to RW07
GP 3.00°		TCH 30	1700	068°	RW07
8.7 NM		3.7 NM	1.2		
CATEGORY	A	B	C	D	
LPV DA	351-1		250 (300-1)		
LNAV/VNAV DA	351-1		250 (300-1)		
LNAV MDA	500-1	399 (400-1)	500-1½	399 (400-1½)	
CIRCLING	500-1 399 (400-1)	560-1 459 (500-1)	560-1½ 459 (500-1½)	700-2 599 (600-2)	

ELEV 101	TDZE 101
REIL Rwy 7 and 25	
MRL Rwy 7-25	

RNAV (GPS) RWY 7

AK, 07 AUG 2025 to 02 OCT 2025

AK, 07 AUG 2025 to 02 OCT 2025