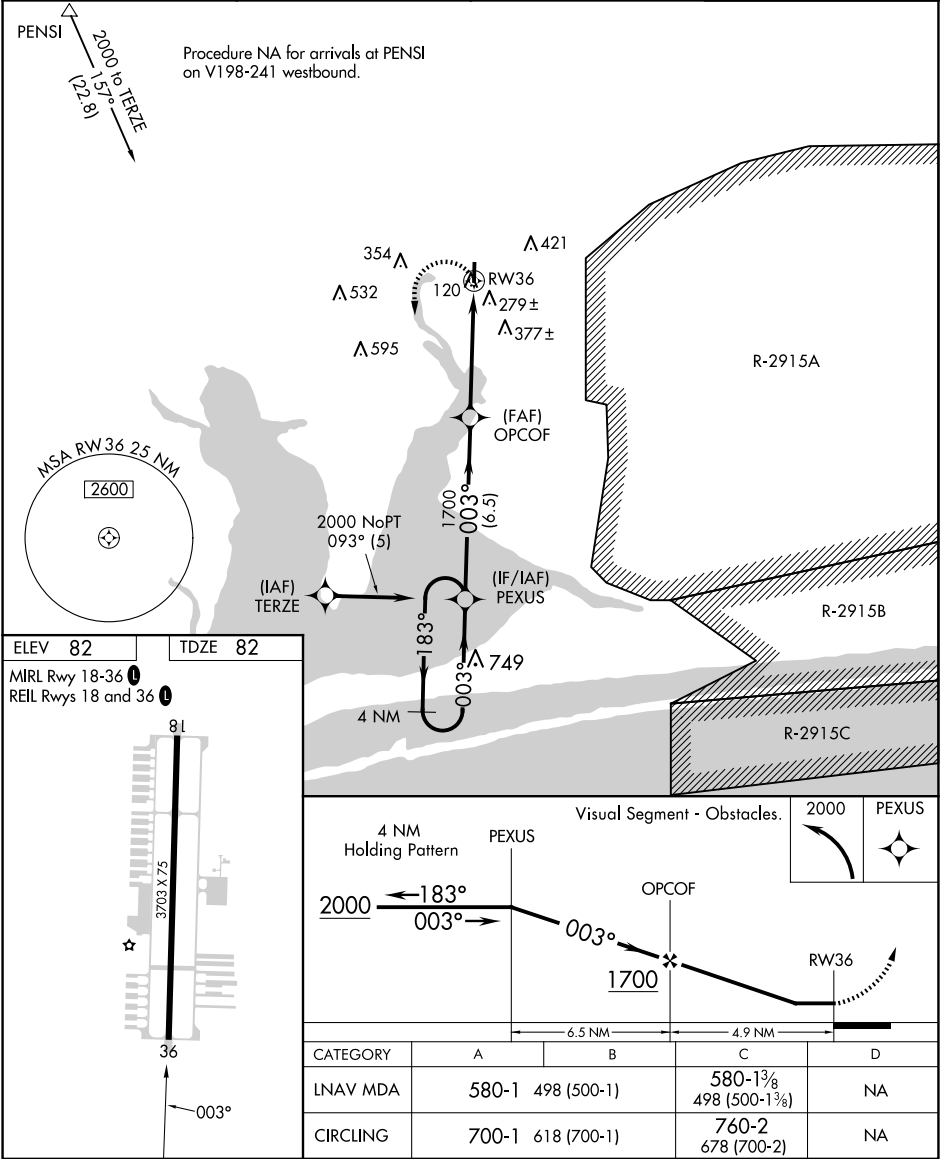


APP CRS	Rwy Idg	3703
003°	TDZE	82
	Apt Elev	82

RNAV (GPS) RWY 36

PETER PRINCE FLD (2R4)

RNP APCH.			MISSED APPROACH: Climbing left turn to 2000 direct PEXUS and hold.
<div><div>▼</div><div>▲ NA</div></div> <div>Rwy 36 helicopter visibility reduction below 1 SM NA. Use Pensacola Intl altimeter setting; when not received, use Crestview altimeter setting and increase all MDA 40 feet; increase LNAV visibility Cat C ½ SM. Procedure NA at night.</div>			
PENSACOLA APP CON 124.85 235.775		GCO 121.725	AUNICOM 122.975 (CTAF) 0



SE-3, 07 AUG 2025 to 04 SEP 2025

SE-3, 07 AUG 2025 to 04 SEP 2025