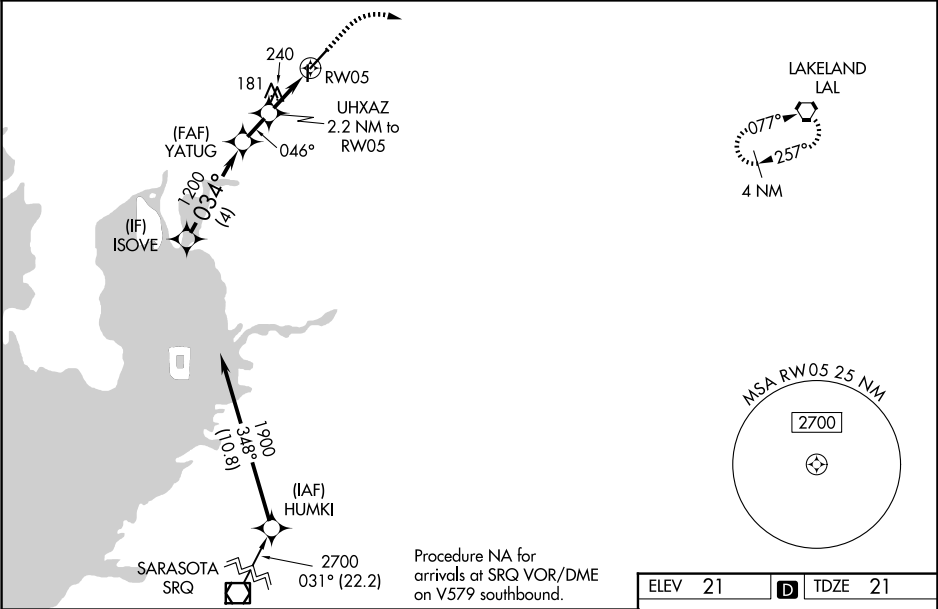


WAAS CH <b>97426</b> <b>W05A</b>	APP CRS <b>046°</b>	Rwy Ldg TDZE Apt Elev <b>4956</b> <b>21</b> <b>21</b>
--	------------------------	--

RNAV (GPS) RWY 5  
TAMPA EXEC (VDF')

RNP APCH-GPS.  ▼ Rwy 5 helicopter visibility reduction below ¾ SM NA. For uncompensated Baro-VNAV systems, LNAV/VNAV NA below 1°C (34°F) or above 54°C (130°F). When local altimeter setting not received, use Tampa Intl altimeter setting and increase LPV DA to 316 feet, LNAV/VNAV DA to 507 feet; increase all MDAs 40 feet and increase LNAV and Circling Cat C visibilities ¼ SM. Baro-VNAV and VDP NA when using Tampa Intl altimeter setting. Circling Rwy 18, 36 NA at night.  ▲ MISSED APPROACH: Climb to 600 then climbing right turn to 2000 direct LAL VORTAC and hold.
--

AWOS-3 <b>121.125</b>	TAMPA APP CON <b>119.9 290.3</b>	UNICOM <b>122.7 (CTAF) 0</b>
--------------------------	-------------------------------------	---------------------------------



VGSI and RNAV glidepath not coincident (VGSI Angle 3.02/TCH 45).		600	2000	LAL
ISOVE		↑	↗	⬡
GP 3.00° TCH 40		*LNAV only.		
1900		YATUG	UHXAZ	RWY05
034°		1200	2.2 NM to	
1200			*1.4 NM to	
046°			RWY05	
*740				
4 NM		1.4 NM	0.8 NM	1.4 NM
CATEGORY	A	B	C	D
LPV DA	271-7/8	250 (300-7/8)		NA
LNAV/VNAV DA	507-15/8	486 (500-15/8)		NA
LNAV MDA	500-1	479 (500-1)	500-13/8 479 (500-13/8)	NA
CIRCLING	540-1 519 (600-1)	760-1 739 (800-1)	800-21/4 779 (800-21/4)	NA

8 L

5000 x 100

3219 x 75

36

046°

REIL Rwys 5, 18, and 36 0

MRL Rwys 5-23 and 18-36 0