

TAMPA, FLORIDA

AL-9241 (FAA)

25219

WAAS CH <b>78100</b> <b>W23A</b>	APP CRS <b>226°</b>	Rwy Ldg <b>4200</b> TDZE <b>21</b> Apt Elev <b>21</b>
--	------------------------	---

RNAV (GPS) RWY 23  
TAMPA EXEC (VDF)

RNP APCH-GPS.

**▼** hop table does not apply to LPV and LNAV Cat A/B. Baro-VNAV NA when using Tampa Intl altimeter setting. For uncompensated Baro-VNAV systems, LNAV/VNAV NA below -15°C (5°F) or above 54°C (130°F). Rwy 23 helicopter visibility reduction below  $\frac{3}{4}$  SM NA. When local altimeter setting not received, use Tampa Intl altimeter setting and increase LPV DA to 323 feet, LNAV/VNAV DA to 513; increase all MDAs 40 feet, and LNAV and Circling Cat C visibilities  $\frac{1}{4}$  SM. Circling Rwy 18, 36 NA at night.

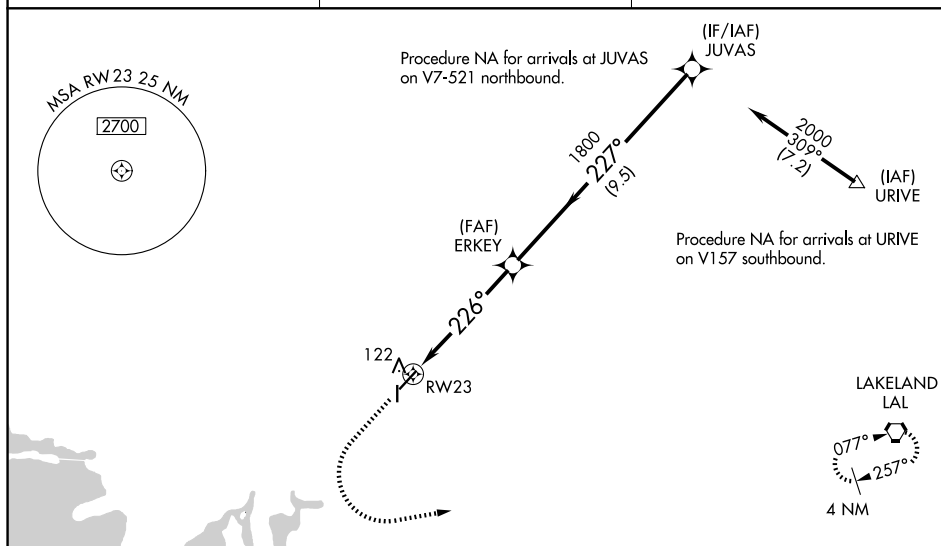
MALSR



**MISSED APPROACH:**  
Climb to 800 then climbing  
left turn to 2700 direct to  
LAL VORTAC and hold.

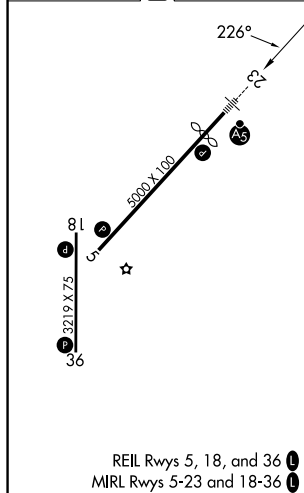
AWOS-3  
121.125

TAMPA APP CON  
119.9 290.3

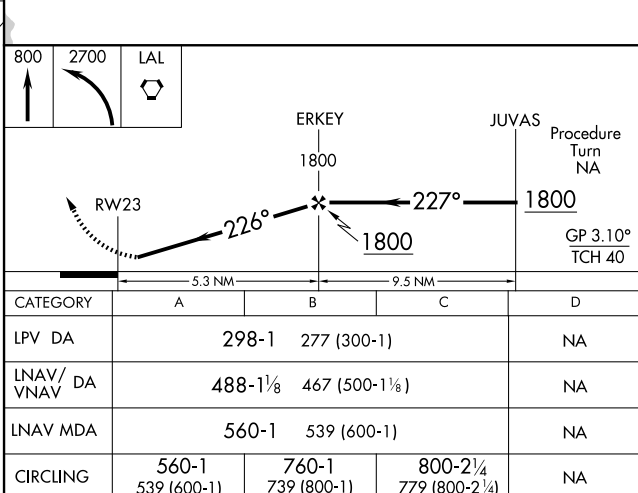
UNICOM  
122.7 (CTAF) **L**

SE-3, 07 AUG 2025 to 04 SEP 2025

ELEV 21	<b>D</b>	TDZE 21
---------	----------	---------



REIL Rwys 5, 18, and 36 **L**  
MIRL Rwys 5-23 and 18-36 **L**



TAMPA, FLORIDA

Amdt 1E 07OCT21

28°01'N-82°21'W

TAMPA EXEC (VDF)

RNAV (GPS) RWY 23