

LOC/DME I-VDF	APP CRS	Rwy Ldg	4200
111.35	226°	TDZE	21
Chan 50 (Y)		Apt Elev	21

ILS or LOC RWY 23

TAMPA EXEC (VDF)

▼

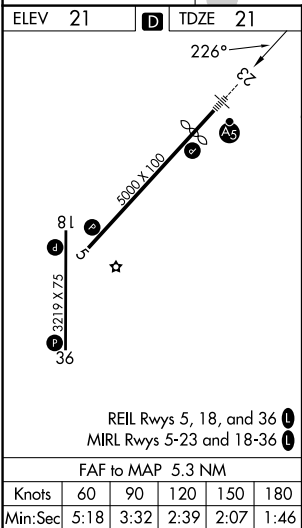
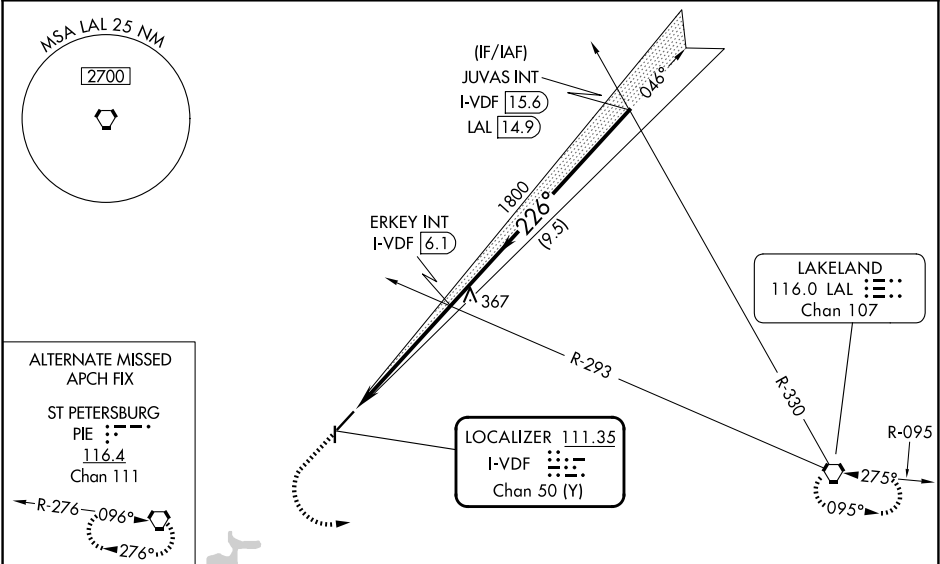
⚠

When local altimeter setting not received, use Tampa Intl altimeter setting and increase S-ILS 23 DA to 323; increase all MDA 40 feet and S-LOC and Circling Cat C visibilities ¼ SM. For inop MALSRR when using Tampa Intl altimeter setting, increase S-LOC 23 Cat C visibility to 1¾. Inop table does not apply to S-ILS 23 and S-LOC 23 Cats A/B. Rwy 23 helicopter visibility reduction below ¾ SM NA. Circling Rwy 18, 36 NA at night.

MALSRR

MISSED APPROACH: Climb to 800 then climbing left turn to 2000 direct LAL VORTAC and hold.

AWOS-3 121.125	TAMPA APP CON 119.9 290.3	UNICOM 122.7 (CTAF) 0
--------------------------	-------------------------------------	---------------------------------



	800	2000	LAL	
	ERKEY INT I-VDF 6.1	JUVAS INT I-VDF 15.6		
	1800	1800		
	I-VDF 0.8	226°	1800	
	5.3 NM	9.5 NM		
	GS 3.10°	TCH 40		
CATEGORY	A	B	C	D
S-ILS 23	298-1	277 (300-1)		NA
S-LOC 23	560-1	539 (600-1)		NA
CIRCLING	560-1 539 (600-1)	760-1 739 (800-1)	800-2¼ 779 (800-2¼)	NA

SE-3, 07 AUG 2025 to 04 SEP 2025

SE-3, 07 AUG 2025 to 04 SEP 2025