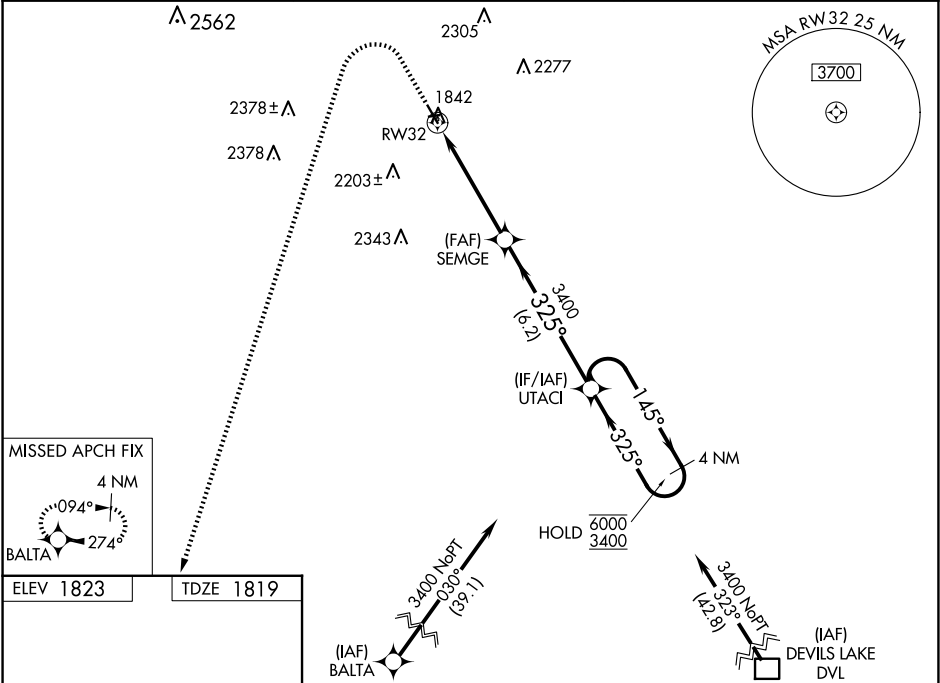


WAAS CH 81834 W32A	APP CRS 325°	Rwy Idg TDZE 1819 Apt Elev 1823
--	------------------------	---

RNAV (GPS) RWY 32
ROLLA MUNI/LEONARD KRECH FLD (Ø6D)

RNP APCH - GPS. Circling NA to Rwys 7 and 25. Circling Rwy 14 NA at night. Baro-VNAV and VDP NA when using Cando Muni altimeter setting. Rwy 32 helicopter visibility reduction below ¼ SM NA. For uncompensated Baro-VNAV systems, LNAV/VNAV NA below -18°C or above 54°C. When local altimeter setting not received, use Cando altimeter setting: increase LPV DA to 2183 feet; increase LNAV/VNAV DA to 2286 feet and all visibilities ¾ SM; increase all MDAs 120 feet and LNAV visibility Cat C/D ¾ SM, and Circling visibility Cat C/D ½ SM.	MISSED APPROACH: Climb to 2300 then climbing left turn to 3800 direct BALTA and hold.
---	---

AWOS-3 118.125	MINNEAPOLIS CENTER 127.6 279.6	UNICOM 122.8 (CTAF) Ø
--------------------------	--	---------------------------------



ELEV 1823	TDZE 1819	MIRL Rwy 14-32 Ø
2300	3800	BALTA
VGSi and RNAV glidepath not coincident (VGSi Angle 3.00/TCH 27).		
SEMGE		
UTACI		
4 NM Holding Pattern		
1.3 NM to RW32		
RW32		
1.3 NM		
3.5 NM		
6.2 NM		
CATEGORY	A	B
LPV DA	2069-1	250 (300-1)
LNAV/VNAV DA	2162-1	343 (400-1)
LNAV MDA	2260-1	441 (500-1)
CIRCLING	2260-1	2340-1
	437 (500-1)	517 (600-1)
	2560-2	2700-2¾
	737 (800-2)	877 (900-2¾)