

WAAS CH 86923 W16A	APP CRS 157°	Rwy Idg TDZE 526 Apt Elev 533
--	------------------------	---

RNAV (GPS) RWY 16

DEXTER RGNL (1BØ)

▼

NA

DME/DME RNP-0.3 NA. Procedure NA at night. Rwy 16, 34 helicopter visibility reduction below 1 SM NA. Use Bangor altimeter setting, when not received use Augusta altimeter setting and increase all MDA 40 feet. Circling NA to Rwy 7 and 25.

MISSED APPROACH: Climb to 3000 direct ATVUW and hold.

BANGOR APP CON 118.925 239.3	UNICOM 122.8 (CTAF) Ø
--	---------------------------------

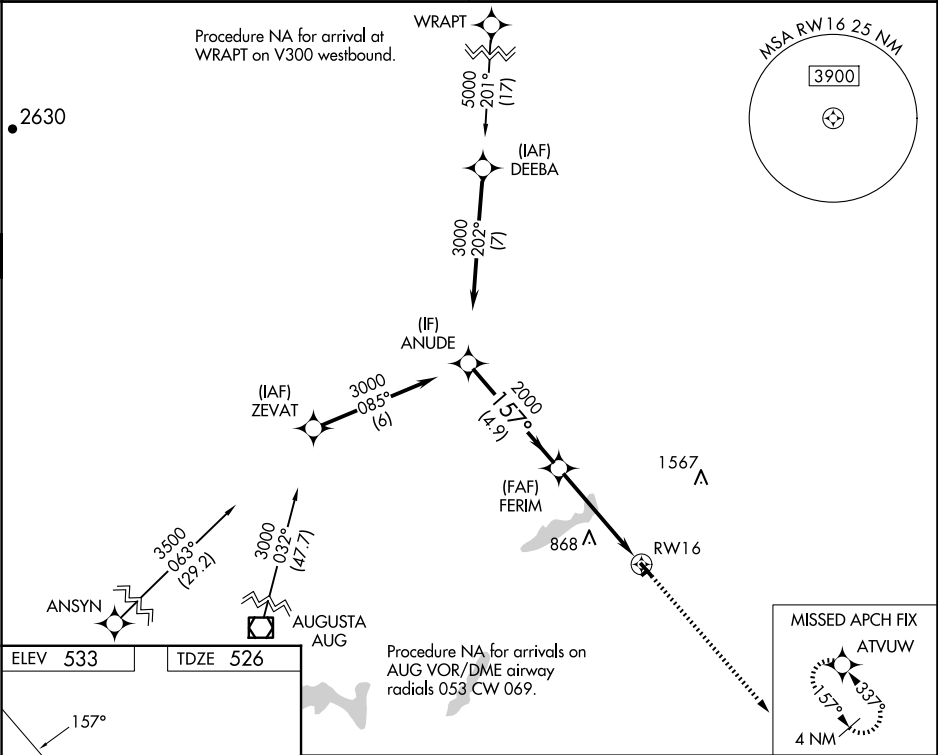


Diagram illustrating the runway layout and dimensions for MIRA Rwy 16-34:

- Runway 16 (left) is 3008 x 75 feet.
- Runway 34 (right) is 1248 x 120 feet.
- The runway is oriented at 157°.
- The runway is 0.6% UP.
- The runway is marked with 573 and 34.

	ANUDE	3000	157°	FERIM	3000 ATVUW
			2000	3.00° TCH 40	RW16
		4.9 NM		4.5 NM	
CATEGORY	A	B	C	D	
LP MDA	1260-1	734 (800-1)		NA	
LNAV MDA	1300-1 774 (800-1)	1300-1¼ 774 (800-1¼)		NA	
CIRCLING	1300-1 767 (800-1)	1360-1¼ 827 (900-1¼)		NA	