

Klawock, Alaska

AL-9230 (FAA)

25163

APP CRS 216°	Rwy Ldg TDZE Apt Elev	5000 80 80
------------------------	-----------------------------	---------------------------------------

RNAV (GPS) RWY 20

RNP APCH-GPS.

T
A Procedure NA at night. Rwy 20 helicopter visibility reduction below 1 SM NA. Circling NA east of Rwy 2-20.

MISSED APPROACH: Climbing left turn to 6000 direct HPSA and hold, continue climb-in-hold to 6000.

ASOS 135.45	ANCHORAGE CENTER 118.5 284.6	KETCHIKAN RADIO 122.25 0	CTAF 120.9
-----------------------	----------------------------------------	------------------------------------	----------------------

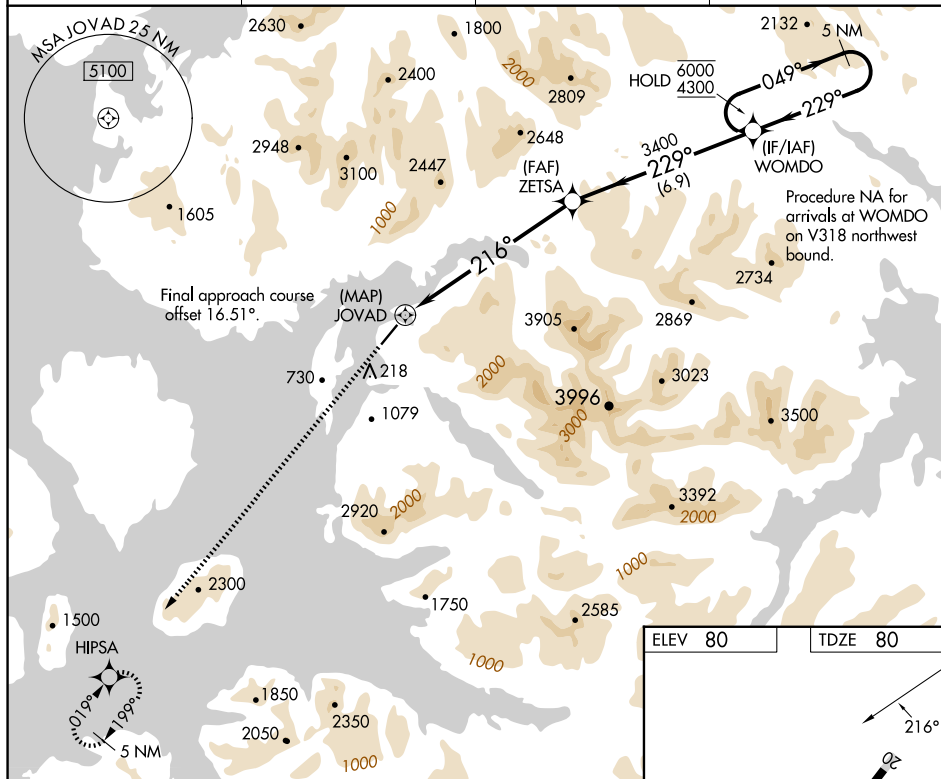
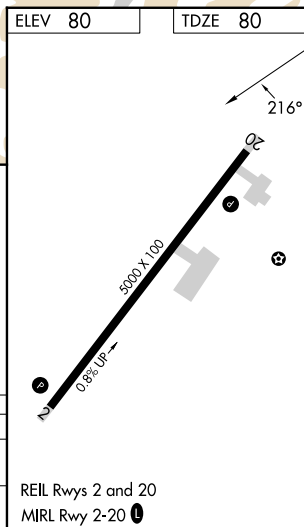


Diagram illustrating the 5 NM Holding Pattern for ZETSA. The pattern is defined by the following parameters:

- Waypoints:** JOVAD, ZETSA, WOMDO.
- Pattern Type:** 5 NM Holding Pattern.
- Angles:** 049° (outbound), 229° (inbound).
- Distances:** 7.2 NM (JOVAD to ZETSA), 6.9 NM (ZETSA to WOMDO).
- Altitudes:** 3400 (at ZETSA), 4300 (at WOMDO).
- Category:** C (CIRCLING).
- MDA:** 2260 (2300-1½).



Klawock, Alaska

Amdt 1 14JUL22

55°35'N-133°05'W

KLAWOCK (AKW) (PAKW)
RNAV (GPS) RWY 20

AK, 07 AUG 2025 to 02 OCT 2025

AK, 07 AUG 2025 to 02 OCT 2025