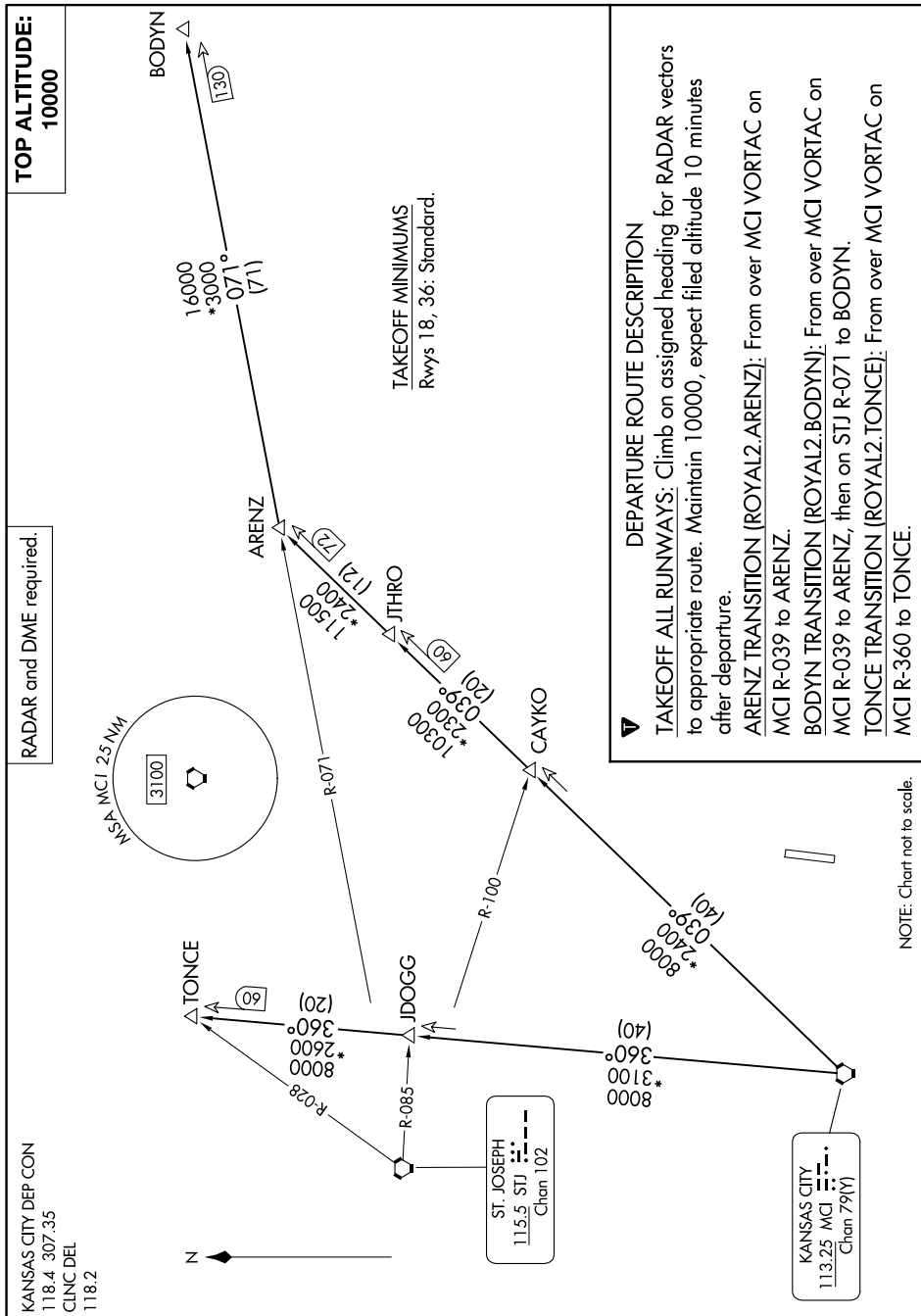
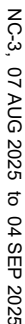


ROYAL TWO DEPARTURE

AL-9229 (FAA)

MIDWEST NTL AIR CENTER (GPH)

MOSBY, MISSOURI



DEPARTURE ROUTE DESCRIPTION

TAKEOFF ALL RUNWAYS: Climb on assigned heading for RADAR vectors to appropriate route. Maintain 10000, expect filed altitude 10 minutes after departure.

ARENZ TRANSITION (ROYAL2.ARENZ): From over MCI VORTAC on MCI R-039 to ARENZ.

BODYN TRANSITION (ROYAL2.BODYN): From over MCI VORTAC on MCI R-039 to ARENZ, then on STJ R-071 to BODYN.

TONCE TRANSITION (ROYAL2.TONCE): From over MCI VORTAC on
MCI R-360 to TONCE.

NOTE: Chart not to scale.

NC-3, 07 AUG 2025 to 04 SEP 2025

ROYAL TWO DEPARTURE

(ROYAL2.MCI) 05SEP24

MOSBY, MISSOURI

MIDWEST NTL AIR CENTER (GPH)