

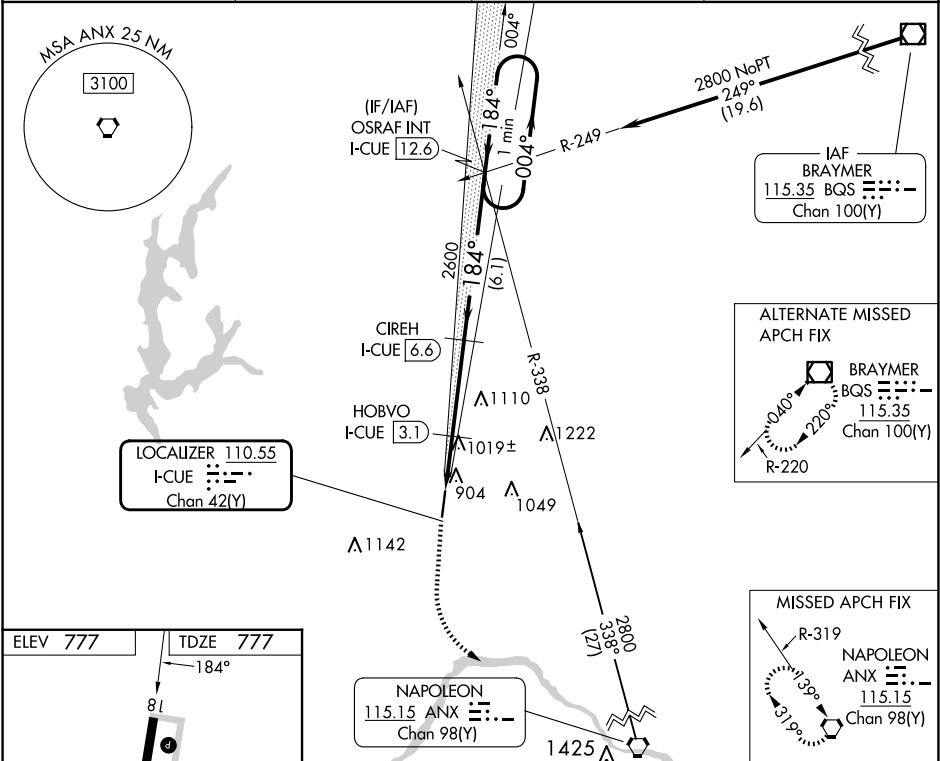
LOC/DME I-CUE 110.55 Chan 42 (Y)	APP CRS 184°	Rwy Ldg TDZE Apt Elev	5502 777 777
------------------------------------------------------	------------------------	-----------------------------	-----------------------------------------

ILS or LOC/DME RWY 18
MIDWEST NTL AIR CENTER (GPH)

Obtain local altimeter setting on CTAF; when not received use Kansas City Intl altimeter setting and increase DA 79 feet and all visibilities ¼ mile; increase all MDAs 80 feet, and Circling visibility Cat C ¼ mile. Autopilot coupled approach NA below 960.

MISSED APPROACH: Climb to 1400 then climbing left turn to 2900 direct ANX VORTAC and hold.

AWOS-3P 120.275	KANSAS CITY APP CON 118.4 307.35	CLNC DEL 118.2	UNICOM 122.7 (CTAF) 0
---------------------------	--------------------------------------------	--------------------------	----------------------------------------



ELEV 777	TDZE 777	184°	81	5502 X 100	36
1400	2900	ANX	VGSI and ILS glidepath not coincident (VGSI Angle 3.50/TCH 59).	OSRAF INT I-CUE 12.6	One Minute Holding Pattern
I-CUE 1.1	I-CUE 2.3	I-CUE 3.1	I-CUE 6.6	2600	184°
1460	2600	1425	1404	1019±	904
1.2 NM	0.8	3.5 NM	6.1 NM		
CATEGORY	A	B	C	D	
S-ILS 18	977-¾	200 (200-¾)		NA	
S-LOC 18	1280-1	503 (600-1)	1280-1½	503 (600-1½)	NA
CIRCLING	1300-1	1320-1	1360-1½	583 (600-1½)	NA
	523 (600-1)	543 (600-1)			

NC-3, 07 AUG 2025 to 04 SEP 2025

NC-3, 07 AUG 2025 to 04 SEP 2025