

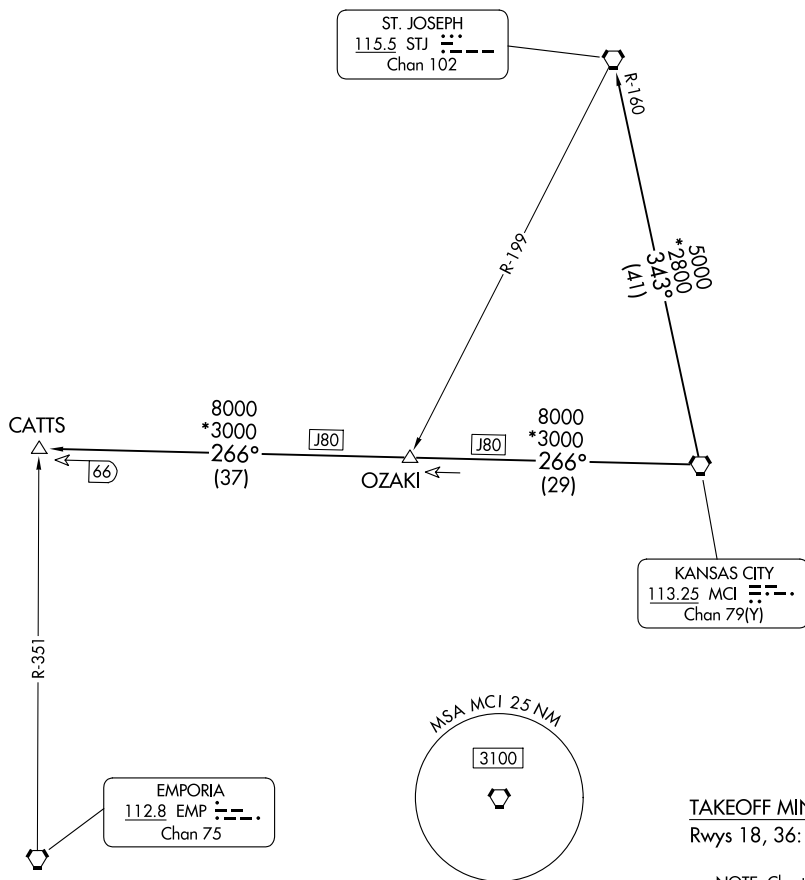
CHIEF NINE DEPARTURE

MIDWEST NTL AIR CENTER (GPH)  
MOSBY, MISSOURI

**TOP ALTITUDE:**  
10000

RADAR required.

KANSAS CITY DEP CON  
118.4 307.35  
CLNC DEL  
118.2



TAKEOFF MINIMUMS  
Rwys 18, 36: Standard.

NOTE: Chart not to scale.

## DEPARTURE ROUTE DESCRIPTION

**TAKEOFF ALL RUNWAYS:** Climb on assigned heading for RADAR vectors to appropriate route. Maintain 10000 or as assigned by ATC, expect filed altitude 10 minutes after departure.

CATTS TRANSITION (CHIEF9.CATTS): From over MCI VORTAC on MCI R-266 to CATTS.

ST. JOSEPH TRANSITION (CHIEF9.STJ): From over MCI VORTAC on MCI R-343 and STJ R-160 to STJ VORTAC.

CHIEF NINE DEPARTURE  
(CHIEF9.MCI) 05OCT23

MOSBY, MISSOURI  
MIDWEST NTL AIR CENTER (GPH)

NC-3, 07 AUG 2025 to 04 SEP 2025