

OXFORD, MAINE

AL-9228 (FAA)

23222

WAAS CH 86329 W33A	APP CRS 329°	Rwy Idg 2997 TDZE 345 Apt Elev 345
--	------------------------	---

RNAV (GPS) RWY 33

OXFORD COUNTY RGNL (81B)

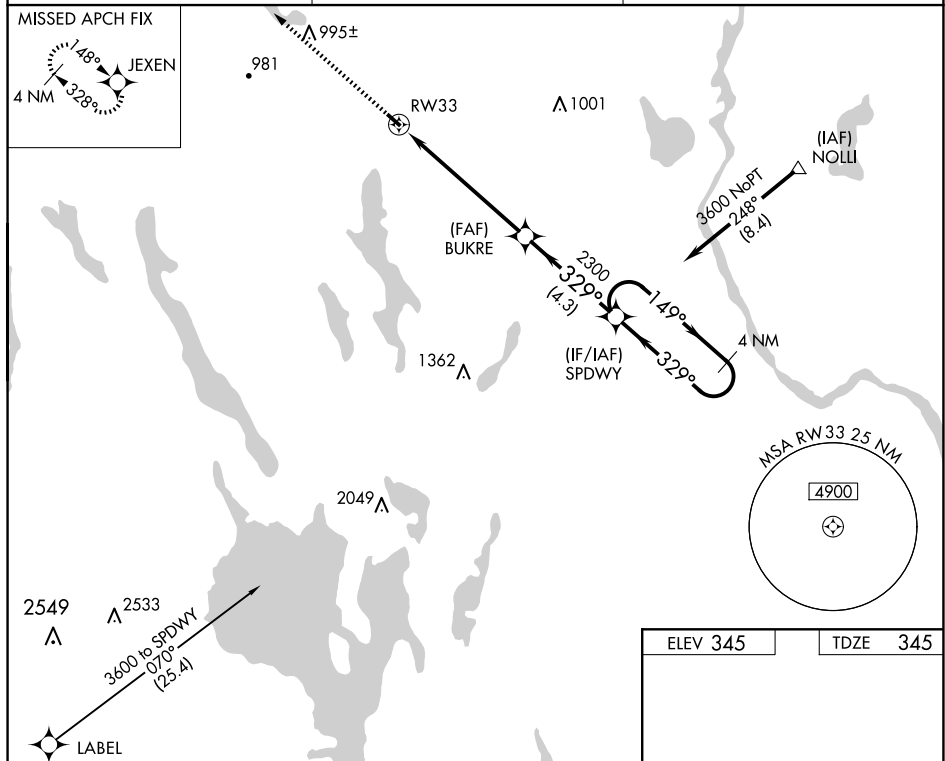


DME/DME RNP-0.3 NA. Procedure NA at night. Use Auburn/Lewiston altimeter setting; when not received, use Fryeburg altimeter setting and increase all MDAs 40 feet. Helicopter visibility reduction below 1 SM NA.

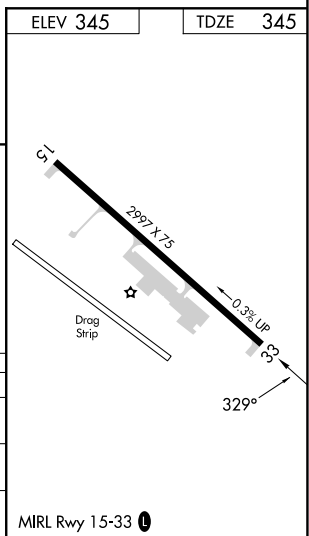
MISSED APPROACH: Climb to 3700 direct JEXEN and hold, continue climb-in-hold to 3700.

LEW AWOS-3
118.025

PORTLAND APP CON ★
125.5 353.9

UNICOM
122.8 (CTAF) **L**

CATEGORY		A	B	C	D
LP	MDA	1120-1 775 (800-1)	1120-1½ 775 (800-1½)		NA
LNAV	MDA	1140-1 795 (800-1)	1140-1½ 795 (800-1½)		NA
CIRCLING		1220-1½ 875 (900-1½)	1400-1½ 1055 (1100-1½)		NA



OXFORD, MAINE
Orig-E 08SEP22

44°09'N-70°29'W

OXFORD COUNTY RGNL (81B)
RNAV (GPS) RWY 33

NE-1, 07 AUG 2025 to 04 SEP 2025