

WAAS CH 48929 W15A	APP CRS 148°	Rwy Idg TDZE 345 Apt Elev 345
----------------------------------------	------------------------	---------------------------------------------------

RNAV (GPS) RWY 15

OXFORD COUNTY RGNL (81B)

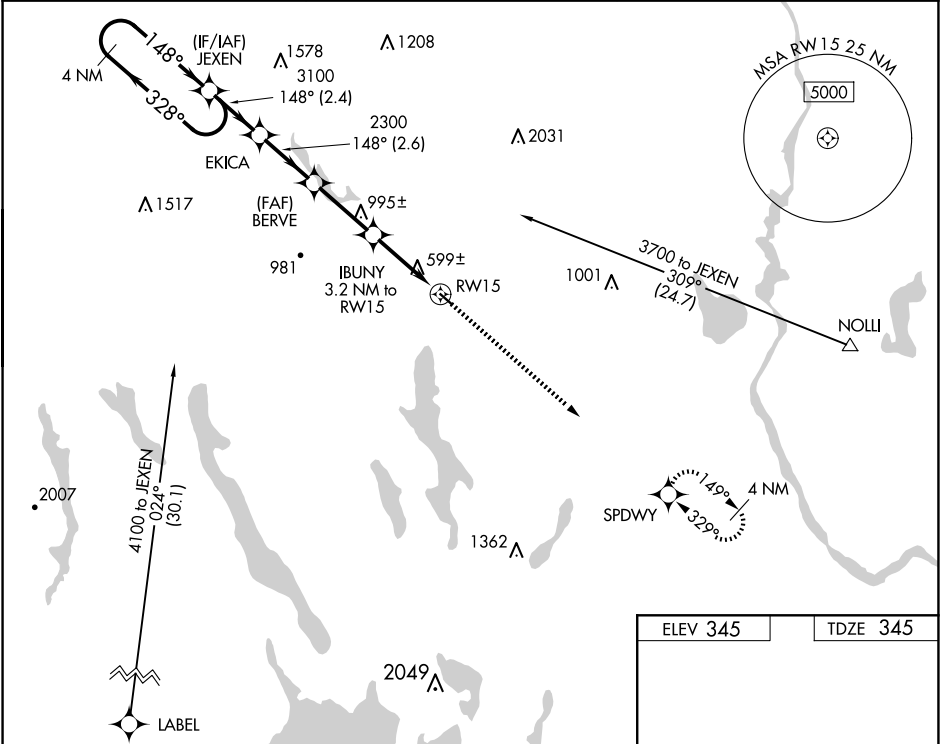
▼

NA

DME/DME RNP-0.3 NA. Procedure NA at night. Use Auburn/Lewiston altimeter setting; when not received, use Fryeburg altimeter setting and increase all MDAs 40 feet. Helicopter visibility reduction below 1 SM NA.

MISSED APPROACH: Climb to 3600 direct SPDWY and hold, continue climb-in-hold to 3600.

LEW AWOS-3 118.025	PORTLAND APP CON ★ 125.5 353.9	UNICOM 122.8 (CTAF) 0
------------------------------	------------------------------------------	---------------------------------



4 NM Holding Pattern				Visual Segment - Obstacles.				3600	SPDWY
3700 ← 328° → 148° → 148° → 3100				JEXEN	EKICA	BERVE	IBUNY 3.2 NM to RW15		
					2300				
						1400			
				← 2.4 NM →		← 2.6 NM →		← 2.8 NM →	
						← 3.2 NM →			
CATEGORY		A		B		C		D	
LP	MDA	900-1		555 (600-1)				NA	
LNAV	MDA	1140-1 795 (800-1)		1140-1¼ 795 (800-1¼)				NA	
CIRCLING		1220-1¼ 875 (900-1¼)		1400-1½ 1055 (1100-1½)				NA	

