

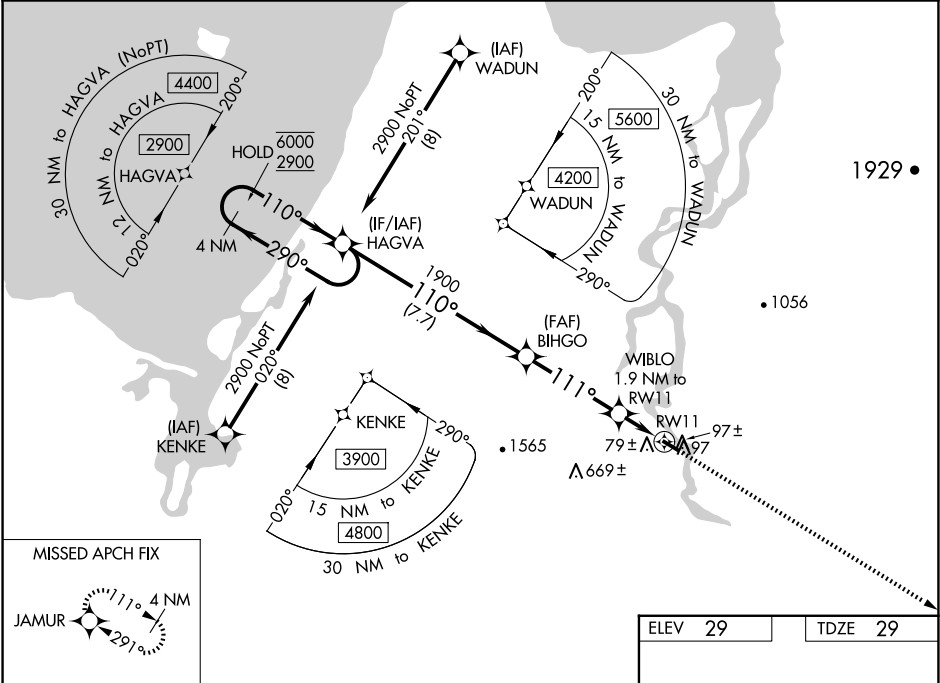
WAAS CH 58041 W11A	APP CRS 111°	Rwy Idg 3200 TDZE 29 Apt Elev 29
--	------------------------	---

RNAV (GPS) RWY 11

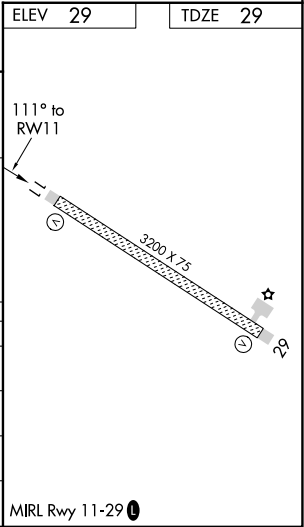
BUCKLAND (BVK)(PABL)

RNP APCH.	MISSED APPROACH: Climb to 3100 direct JAMUR and hold, continue climb-in-hold to 3100.
Baro-VNAV and VDP NA when using Selawik altimeter setting. For uncompensated Baro-VNAV systems, LNAV/VNAV NA below -21°C or above 54°C. When local altimeter setting is not received use Selawik altimeter setting: increase DA to 387 feet and all visibilities $\frac{3}{8}$ SM; increase all MDAs 120 feet and visibility Cat C $\frac{1}{4}$ SM.	

AWOS-3P 135.15	ANCHORAGE CENTER 119.2 263.0	KOTZEBUE RADIO 122.3	CTAF 122.9 0
--------------------------	--	--------------------------------	------------------------



VGSI and RNAV glidepath not coincident (VGSI Angle 3.00/TCH 25).				
4 NM Holding Pattern				
6000 ← 290° 2900 → 110°				
GP 3.00° TCH 30				
HAGVA BIHGO WIBLO				
1900 1.9 NM to RW11				
*0.9 NM to RW11				
*660				
7.7 NM 3.9 NM 1 NM 0.9				
CATEGORY	A	B	C	D
LPV DA	279-1	250 (300-1)		NA
LNAV/VNAV DA	279-1	250 (300-1)		NA
LNAV MDA	340-1	311 (400-1)		NA
CIRCLING	540-1	511 (600-1)	640-1 $\frac{3}{4}$ 611 (700-1 $\frac{3}{4}$)	NA



AK, 07 AUG 2025 to 02 OCT 2025

AK, 07 AUG 2025 to 02 OCT 2025