

APP CRS  
**099°**

Rwy Idg  
**3200**

TDZE  
**400**

Apt Elev  
**400**

**RNAV (GPS) RWY 10**

WHITFORDS (B16)

RNP APCH.

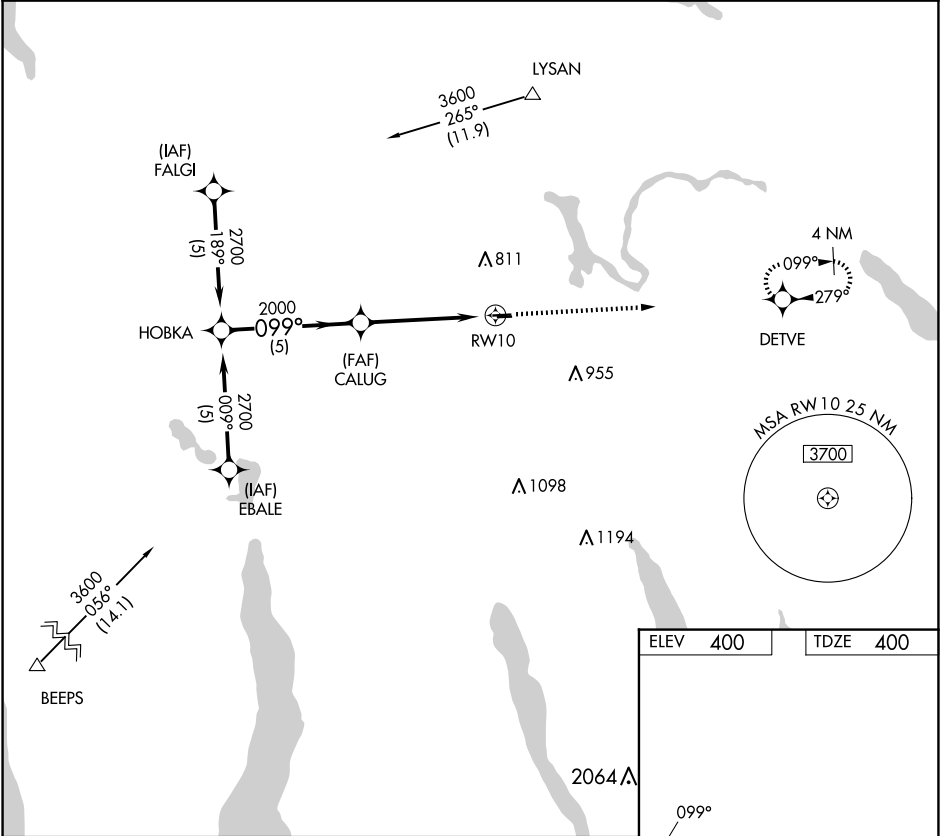
▼

NA

Use Syracuse altimeter setting. Procedure NA at night.  
Rwy 10 helicopter visibility reduction below 1 SM NA.

MISSED APPROACH: Climb to 3000 direct DETVE WP and hold.

SYRACUSE APP CON <b>126.125 269.125</b>	UNICOM <b>122.8</b> (CTAF)	<b>122.7</b> <b>0</b>
--	-------------------------------	-----------------------



HOBKA  
2700

Procedure Turn  
NA

CALUG

2000

RW10

3.04°  
TCH 40

5.0 NM

4.8 NM

3000

DETVE

099°

3630 X 60

28

2800 X 100

CATEGORY	A	B	C	D
LNAV MDA	1020-1	620 (700-1)	NA	

MIRL Rwy 10-28 **0**