

|  |                        |   |
|--|------------------------|---|
| WAAS<br>CH <b>53524</b><br><b>W25A</b> | APP CRS<br><b>252°</b> | Rwy Idg <b>4299</b><br>TDZE <b>2653</b><br>Apt Elev <b>2653</b> |
|--|------------------------|---|

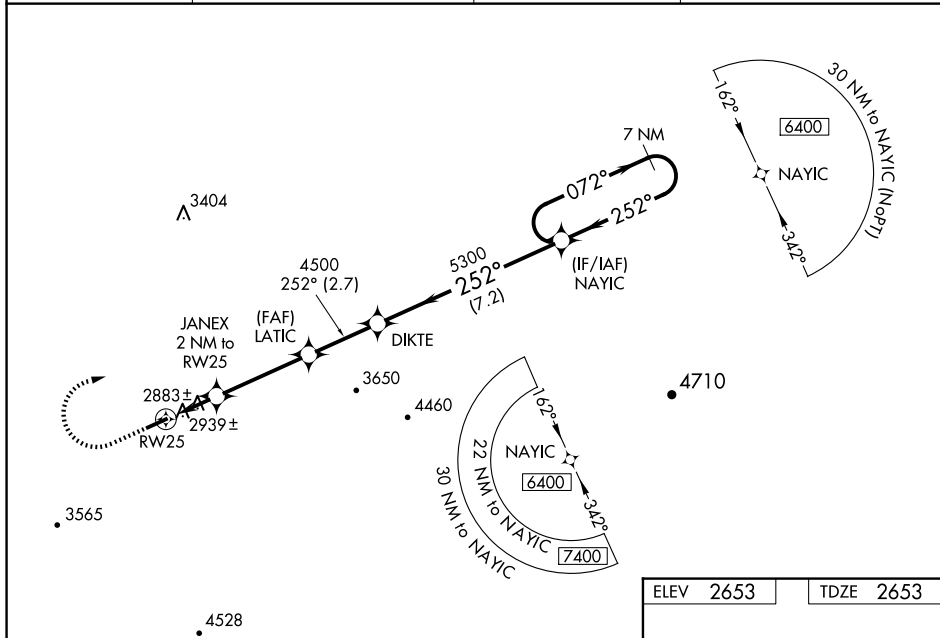
# RNAV (GPS) RWY 25

TAZEWELL COUNTY (JFZ)

**T** Baro-VNAV NA when using Wise altimeter setting. For uncompensated Baro-VNAV systems, LNAV/VNAV NA below -20°C (-4°F) or above 54°C (130°F). DME/DME RNP-0.3 NA. Visibility reduction by helicopters NA. When local altimeter setting not received, use Wise altimeter setting and increase all DA 86 feet and all MDA 100 feet, increase LPV and LNAV/VNAV all Cats and Circling Cat C visibility ¾ mile, increase LNAV Cat C visibility ¼ mile. When VGSI inop, Straight-in/Circling Rwy 25 procedure NA at night. When VGSI inop, Circling Rwy 7 NA at night. Circling Rwy Cat C south of Rwy 7-25.

**MISSED APPROACH:**  
Climb to 3800 then  
climbing right turn to  
6400 direct NAYIC  
and hold, continue  
climb-in-hold to 6400.

|                          |                                       |                       |                                  |
|--------------------------|---------------------------------------|-----------------------|----------------------------------|
| AWOS-3<br><b>118.075</b> | ATLANTA CENTER<br><b>127.85 269.3</b> | GCO<br><b>135.075</b> | UNICOM<br><b>123.05 (CTAF) 0</b> |
|--------------------------|---------------------------------------|-----------------------|----------------------------------|



3800 6400 NAYIC

VGS1 and RNAV glidepath not coincident  
(VGS1 Angle 3.50/TCH 47).

7 NM  
Holding Pattern

\* LNAV only.


RW25 JANEX 2 NM to RW25 LATIC 4500 DIKTE 5300 NAYIC

252° 072° 6400

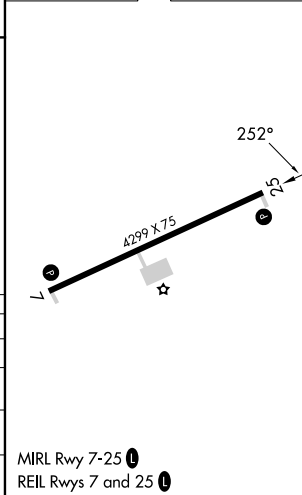
3340\* 4500

GP 3.00°  
TCH 54

2 NM 3.6 NM 2.7 NM 7.2 NM

| CATEGORY   | A                    | B                          | C  | D  |
|--|----------------------|----------------------------|--|----|
| LPV DA   | 3201-1 $\frac{7}{8}$ | 548 (600-1 $\frac{7}{8}$ ) |  | NA |
| RNAV/<br>VNAV DA   | 3210-1 $\frac{7}{8}$ | 557 (600-1 $\frac{7}{8}$ ) |  | NA |
| RNAV MDA   | 3200-1               | 547 (600-1)                | 3200-1 $\frac{7}{8}$<br>547 (600-1 $\frac{7}{8}$ ) | NA |
|  CIRCLING | 3240-1               | 587 (600-1)                | 3240-1 $\frac{7}{8}$<br>587 (600-1 $\frac{7}{8}$ ) | NA |

|           |  |           |
|-----------|--|-----------|
| ELEV 2653 |  | TDZE 2653 |
|-----------|--|-----------|



RNAV (GPS) RWY 25