

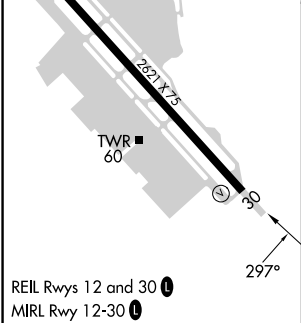
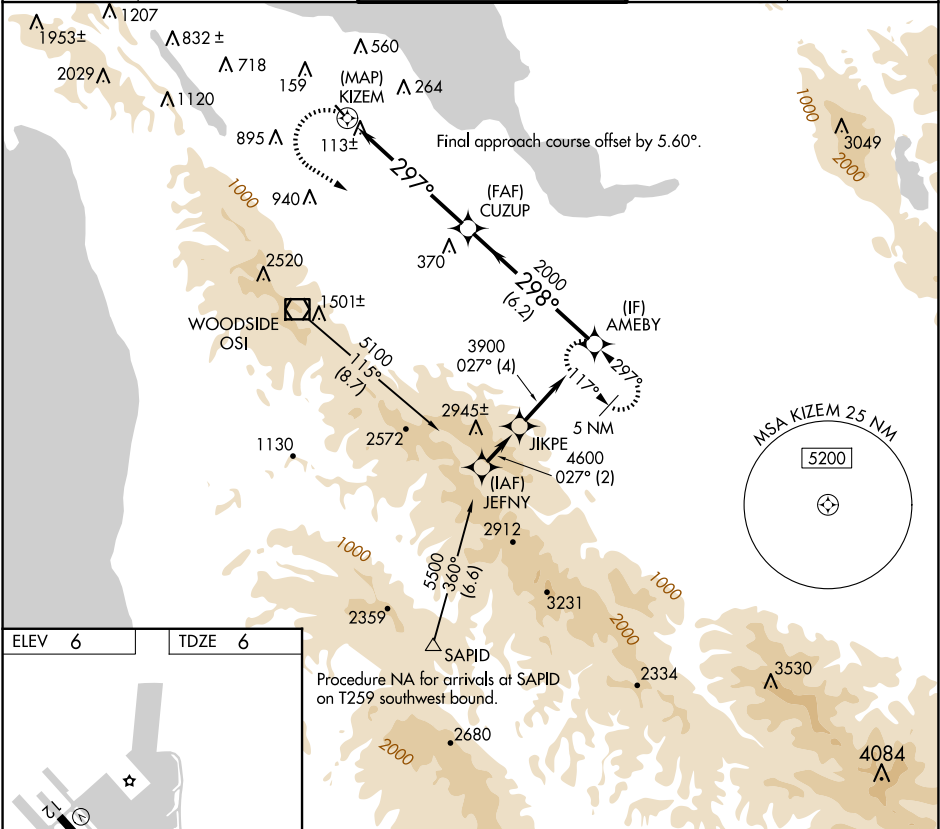
APP CRS	Rwy ldg	2621
297°	TDZE	6
	Apt Elev	6



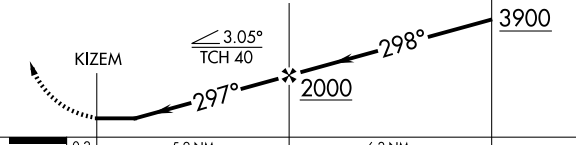
RNAV (GPS) Z RWY 30

SAN CARLOS (SQL)

RNP APCH - GPS.	MISSED APPROACH: Climbing left turn to 5400 direct AMEBY and hold, continue climb-in-hold to 5400. Missed approach requires minimum climb of 340 feet per NM to 1300; if unable to meet climb gradient, see RNAV (GPS) Y RWY 30.
▼ ▲ Rwy 30 helicopter visibility reduction below ¾ SM NA.	

ATIS 125.9	NORCAL APP CON 133.95 317.6	SAN CARLOS TOWER ★ 119.0 (CTAF) 326.2	GND CON 121.6	UNICOM 122.95
---------------	--------------------------------	--	------------------	------------------



5400	AMEBY	VGSI and descent angles not coincident (VGSI Angle 3.00/TCH 25).			
					
					
CATEGORY	A	B	C	D	
LNAV MDA	900-1¼ 894 (900-1¼)		NA		