

APP CRS
322°

Rwy Idg **2441**
TDZE **7**
Apt Elev **7**

RNAV (GPS) RWY 31
PALO ALTO (PAO)

RNP APCH

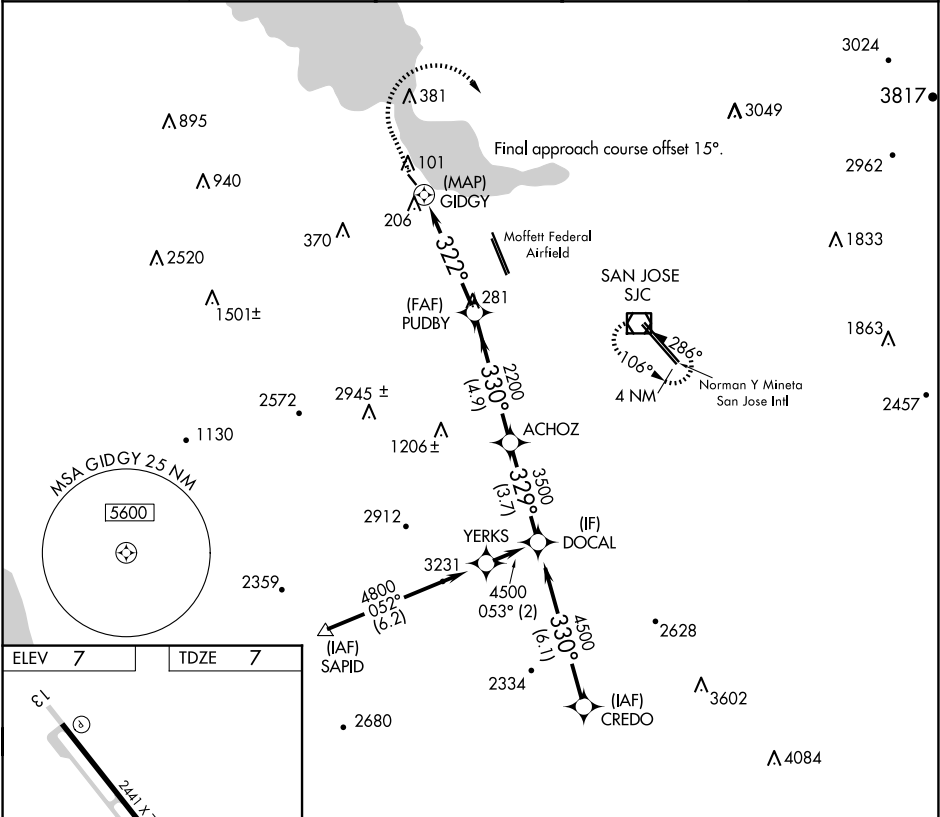
▼

▲

Circling NA southwest of Rwy 13-31. Rwy 31 helicopter visibility reduction below 1 SM NA. Procedure NA at night. When control tower closed, use Norman Y Mineta San Jose Intl altimeter setting and increase all MDAs 40 feet.

MISSED APPROACH: Climb to 1400 then dimbing right turn to 3000 direct SJC VOR/DME and hold.

| | | | | |
|------------------------|---------------------------------------|---|-------------------------|-------------------------|
| ATIS 135.275 | NORCAL APP CON 121.3 270.35 | PALO ALTO TOWER★ 118.6 (CTAF) | GND CON 125.0 | UNICOM 122.95 |
|------------------------|---------------------------------------|---|-------------------------|-------------------------|



ELEV 7

TDZE 7

1400

3000

SJC

GIDGY

PUDBY

ACHZOZ

DOCAL

0.5

4.6 NM

4.9 NM

3.7 NM

| | | | | |
|----------|----------------------|----------------------|----|---|
| CATEGORY | A | B | C | D |
| LNAV MDA | 460-1 | 453 (500-1) | NA | |
| CIRCLING | 460-1 453 (500-1) | 520-1 513 (600-1) | NA | |