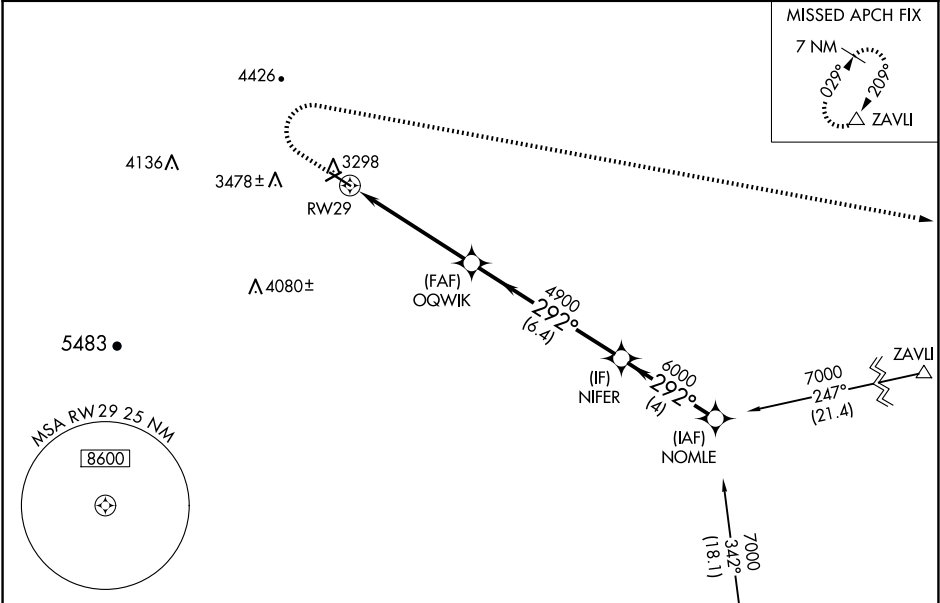


WAAS CH 90321 W29A	APP CRS 292°	Rwy Idg TDZE 3231 Apt Elev 3255
--	------------------------	---

RNAV (GPS) RWY 29
STURGIS MUNI (49B)

RNP APCH - GPS.	MISSED APPROACH: Climb to 3700 then climbing right turn to 7000 direct ZAVU and hold.
For uncompensated Baro-VNAV systems, LNAV/VNAV NA below -21°C or above 54°C *Missed approach requires minimum climb of 364 feet per NM to 4900.	

AWOS-3P 119.275	ELLSWORTH APP CON ★ 119.5 259.1	GCO 121.725	UNICOM 122.8 (CTAF) 0
---------------------------	---	-----------------------	---------------------------------



ELEV 3255	TDZE 3231
------------------	------------------

Diagram of MRL Rwy 11-29 showing various approach paths and altitudes. The runway is 3580 x 120 feet. The diagram includes a 0.8% UP slope, a 5100 x 75 feet section, and a 0.7% UP slope. The approach angle is 292°. The diagram also shows a 3700 foot altitude, a 7000 foot altitude, and a 4900 foot altitude. The diagram includes a 5.2 NM distance, a 6.4 NM distance, and a 4 NM distance. The diagram also shows a 292° angle, a 7000 foot altitude, and a 4900 foot altitude.

Procedure NA for arrivals at RAP VORTAC on airway radials 252 CW 072.

RAPID CITY RAP

3700 7000 ZAVU

VGSI and RNAV glidepath not coincident (VGSI Angle 3.00/TCH 29).

NOMLE

NIFER

OGWIK

RWY 29

4900 4900

292° 7000

GP 3.00° TCH 50

5.2 NM 6.4 NM 4 NM

CATEGORY	A	B	C	D
LPV DA*	3532-1 301 (300-1)			NA
LPV DA	3532-1 301 (300-1)		4073-3 842 (900-3)	NA
LNAV/VNAV DA	3532-1 301 (300-1)		3986-3 755 (800-3)	NA
LNAV MDA	3640-1 409 (400-1)		4280-3 1049 (1100-3)	NA