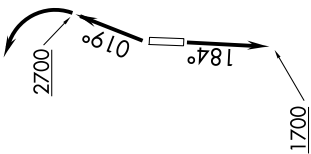


SC-2, 07 AUG 2025 to 04 SEP 2025

LONE STAR DEP CON
125.2 343.65
CTAF
122.975

TOP ALTITUDE:
ASSIGNED BY ATC

TAKEOFF MINIMUMS
Rwys 18, 36: Standard.



NOTE: Chart not to scale.

- NOTE: RADAR required.
- NOTE: RNAV 1.
- NOTE: DME/DME/IRU or GPS required.
- NOTE: BDDAY Transition: ATC assigned only.
- NOTE: MRSSH Transition: For aircraft inbound to Shreveport, Jackson and Monroe terminal area airports only.

(CONTINUED ON FOLLOWING PAGE)

SC-2, 07 AUG 2025 to 04 SEP 2025