

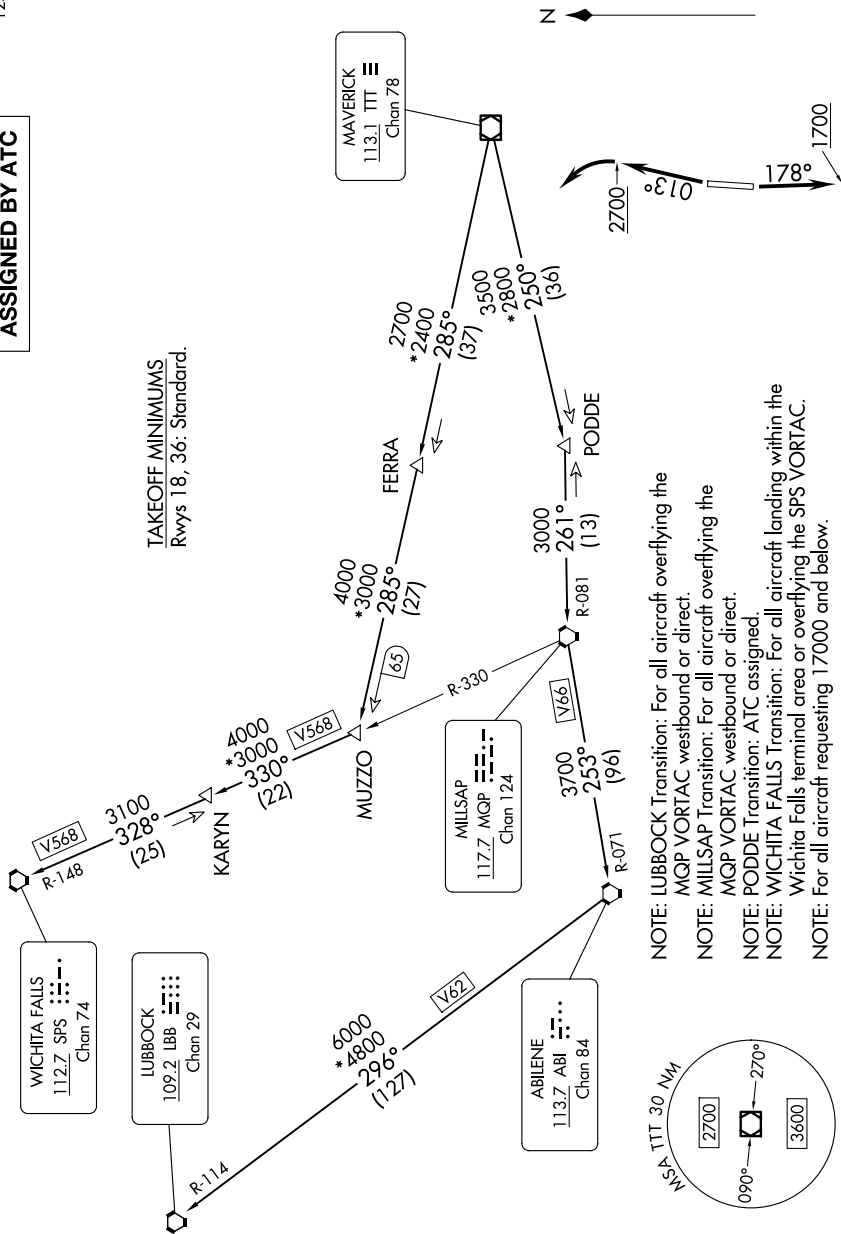
KINGDOM FIVE DEPARTURE

LONE STAR DEP CON
125.2 343.65
CTAF
122.975

**TOP ALTITUDE:
ASSIGNED BY ATC**

RADAR and DME required.

TAKEOFF MINIMUMS
Rwys 18, 36: Standard.



NOTE: Chart not to scale.

NOTE: LUBBOCK Transition: For all aircraft overflying the MQP VORTAC westbound or direct.

NOTE: MILLSAP Transition: For all aircraft overflying the MQP VORTAC westbound or direct.

NOTE: PODDE Transition: ATC assigned.

NOTE: WICHITA FALLS Transition: For all aircraft landing within the Wichita Falls terminal area or overflying the SPS VORTAC.

NOTE: For all aircraft requesting 17000 and below.

(CONTINUED ON FOLLOWING PAGE)

KINGDOM FIVE DEPARTURE

(KING5.TTT) 17APR25

MIDLOTHIAN/WAXAHACHIE, TEXAS

MID-WAY RGNL (JWY)