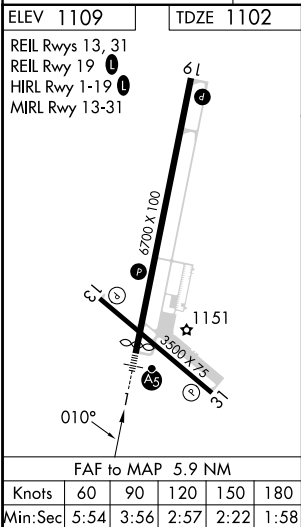
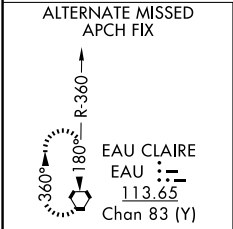
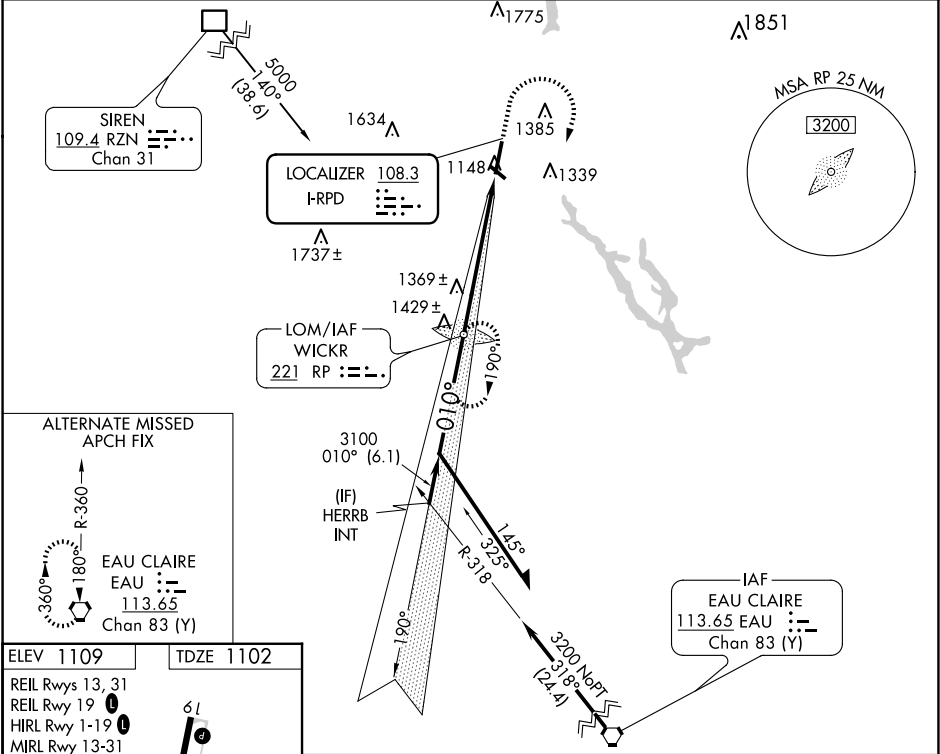


LOC I-RPD	APP CRS	Rwy Idg	6500
108.3	010°	TDZE	1102
		Apt Elev	1109

ILS or LOC RWY 1
RICE LAKE RGNL/CARL'S FLD (RPD)

ADF required. From RZN DME: RNAV 1-GPS required.	MALSR	MISSED APPROACH: Climb to 2200 then climbing right turn to 3200 direct WICKR LOM and hold.
Circling Rwy 13, 31 NA at night.		

AWOS-3 120.525	MINNEAPOLIS CENTER 125.3 335.6	UNICOM 122.7 (CTAF)
-------------------	-----------------------------------	------------------------



Remain within 10 NM	RP LOM	2200	3200	RP
3200	3065	VGSI and ILS glidepath not coincident (VGSI Angle 3.00°/TCH 28).		
GS 3.00° TCH 45	3100	5.9 NM		
CATEGORY	A	B	C	D
S-ILS 1	1302-1½ 200 (200-½)			
S-LOC 1	1620-1½ 518 (600-½)	1620-1 518 (600-1)	1620-1 518 (600-1½)	1620-1¼ 518 (600-1¼)
CIRCLING	1620-1 511 (600-1)	1740-1 631 (700-1)	1740-1¾ 631 (700-1¾)	1940-2¾ 831 (900-2¾)