

WAAS CH 40404 W22A	APP CRS 217°	Rwy Ldg 3002 TDZE 17 Apt Elev 17
----------------------------------------	------------------------	-------------------------------------------------------------

RNAV (GPS) Z RWY 22

RNP APCH.

T For uncompensated Baro-VNAV systems, LNAV/VNAV NA below -25°C or above 49°C.

MISSED APPROACH: Climb to 3000 direct BECAY and left turn on track 127° to APACU and left turn on track 037° to ESARE and hold.

AWOS-3P

135.65

ANCHORAGE CENTER

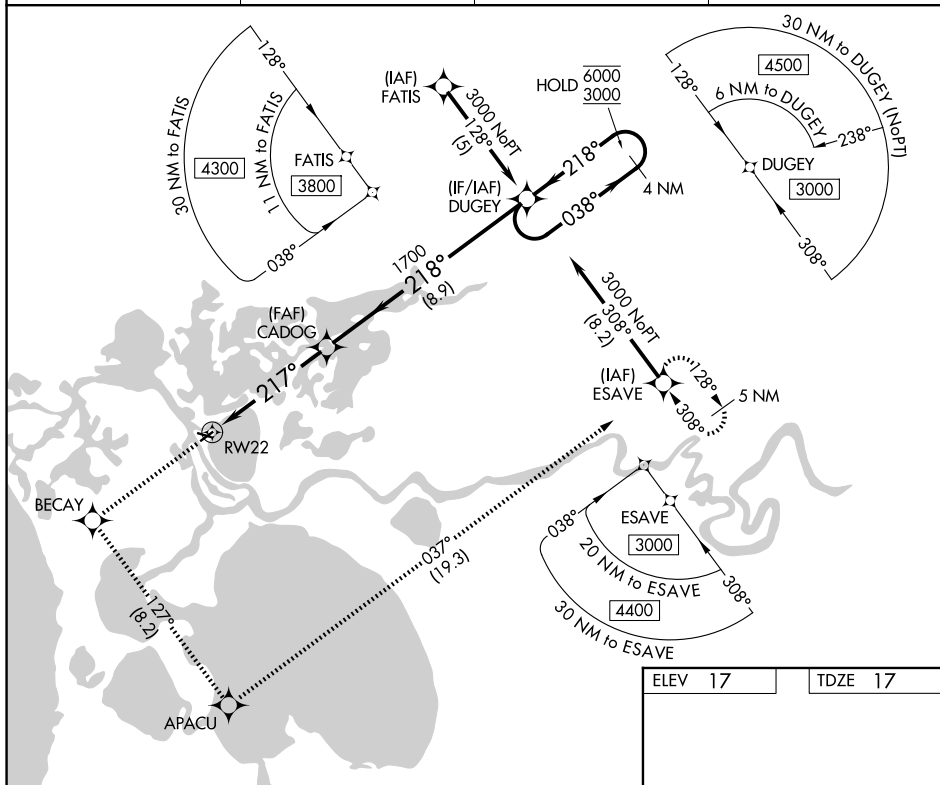
119.2 263.0

KOTZEBUE RADIO

122.5

CTAF

122.7 0



3000 BECAY tr 127° APACU tr 037° ESAVE DUGEY 4 NM Holding Pattern

CADOG 1700 038° 6000 218° 3000

RW22 217° 1700 218°

5.1 NM 8.9 NM

GP 3.00° TCH 45

ELEV 17

TDZE 17

CATEGORY	A	B	C	D
LPV DA	267-1 250 (300-1)			
LNAV/VNAV DA	364-1¼ 347 (400-1¼)			

MIRL Rwy 9-27 and 4-22 **L**