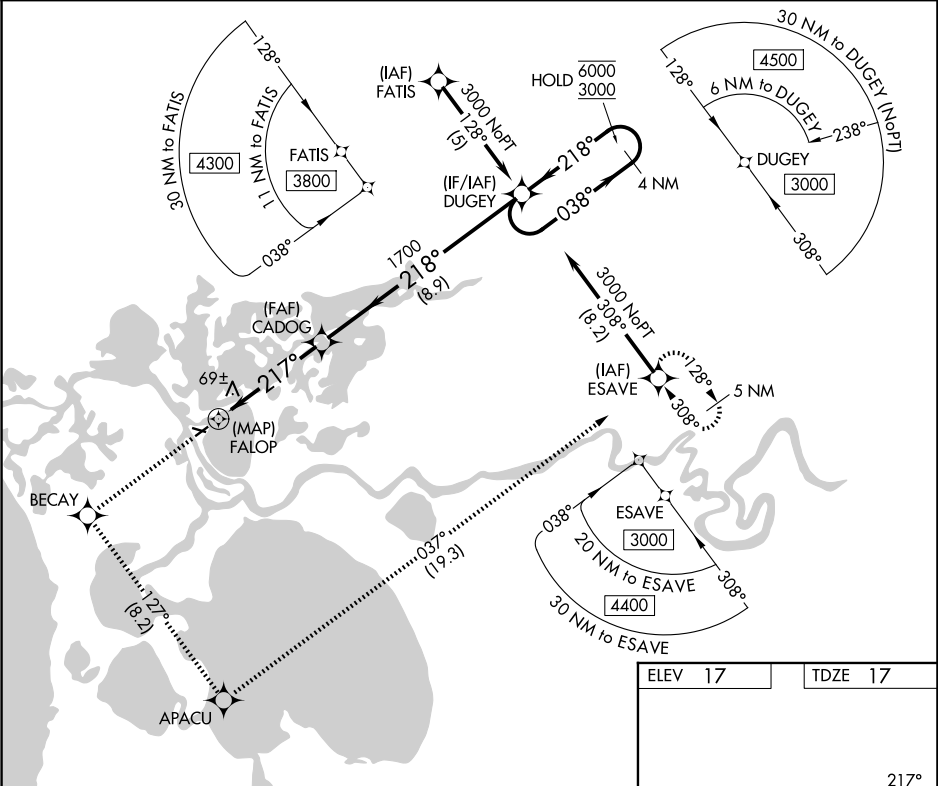


APP CRS	Rwy Ldg	3002
217°	TDZE	17
	Apt Elev	17

RNAV (GPS) Y RWY 22

SELAWIK (WLK) (PASK)

RNP APCH. <div>▼</div> <div>Circling Rwy 9, 27 NA at night.</div>		MISSED APPROACH: Climb to 3000 direct BECAY and left turn on track 127° to APACU and left turn on track 037° to ESAVE and hold.	
AWOS-3P 135.65	ANCHORAGE CENTER 119.2 263.0	KOTZEBUE RADIO 122.5	CTAF 122.7 0



3000 ↑	BECAY ✦	tr 127° ↷	APACU ✦	tr 037° ↷	ESAVE ✦	DUGEY	4 NM Holding Pattern
<p>CADOG</p> <p>FALOP $\leq 3.05^\circ$ TCH 45</p> <p>038° → 6000 ← 218° 3000</p>							
CATEGORY	A	B	C	D			
LNVA MDA	320-1 303 (400-1)						
CIRCLING	480-1 463 (500-1)	580-1 563 (600-1)	580-1½ 563 (600-1½)	580-2 563 (600-2)			
MIRL Rwy 9-27 and 4-22 0							