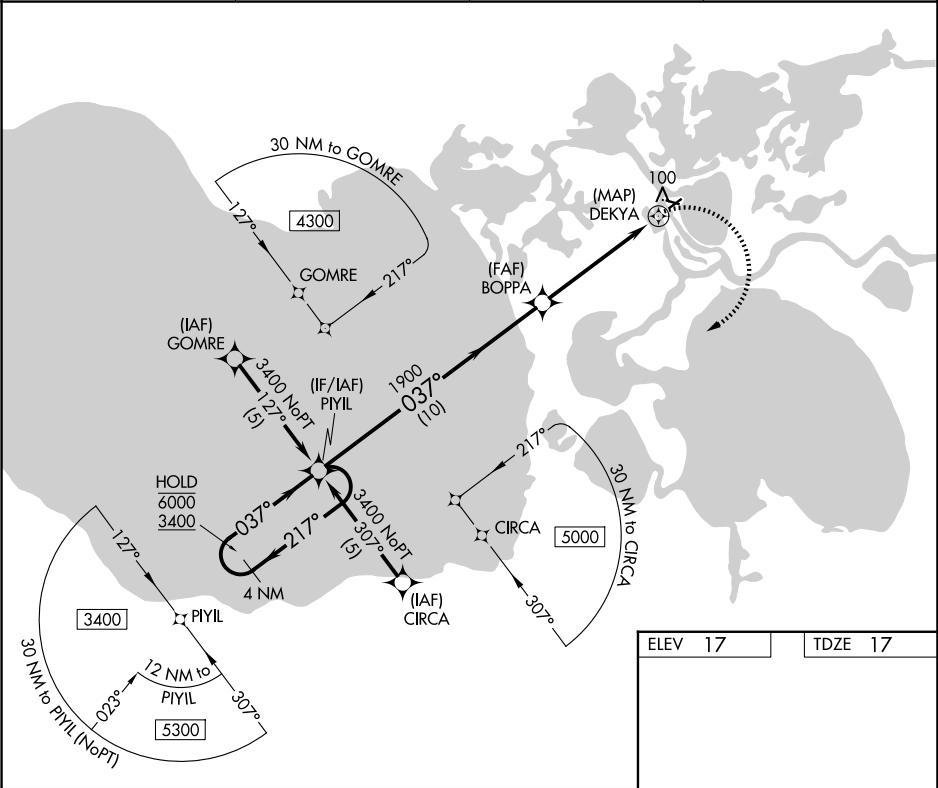


APP CRS	Rwy Ldg	3002
037°	TDZE	17
	Apt Elev	17

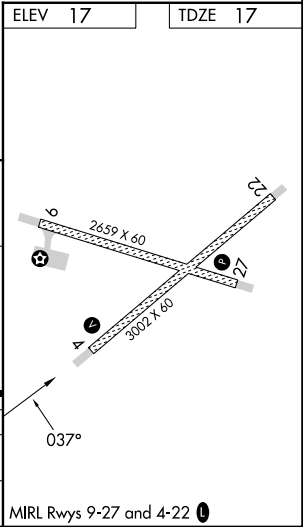
RNAV (GPS) RWY 4

SELAWIK (WLK) (PASK)

RNP APCH. ▼ Circling Rwy 9, 27 NA at night. Rwy 4 helicopter visibility reduction below ¾ SM NA.		MISSED APPROACH: Climbing right turn to 3400 direct PIYIL and hold.	
AWOS-3P 135.65	ANCHORAGE CENTER 119.2 263.0	KOTzebue RADIO 122.5	CTAF 122.7 0



4 NM Holding Pattern		VGSI and descent angles not coincident (VGSI Angle 3.00/TCH 25).		3400	PIYIL
6000	3400	217°	037°	037°	1900
		10 NM	4 NM	1.2 NM	0.5
CATEGORY	A	B	C	D	
LNVA MDA	420-1	403 (500-1)	420-1¼	403 (500-1¼)	
CIRCLING	480-1 463 (500-1)	580-1 563 (600-1)	580-1½ 563 (600-1½)	580-2 563 (600-2)	



AK, 07 AUG 2025 to 02 OCT 2025

AK, 07 AUG 2025 to 02 OCT 2025