

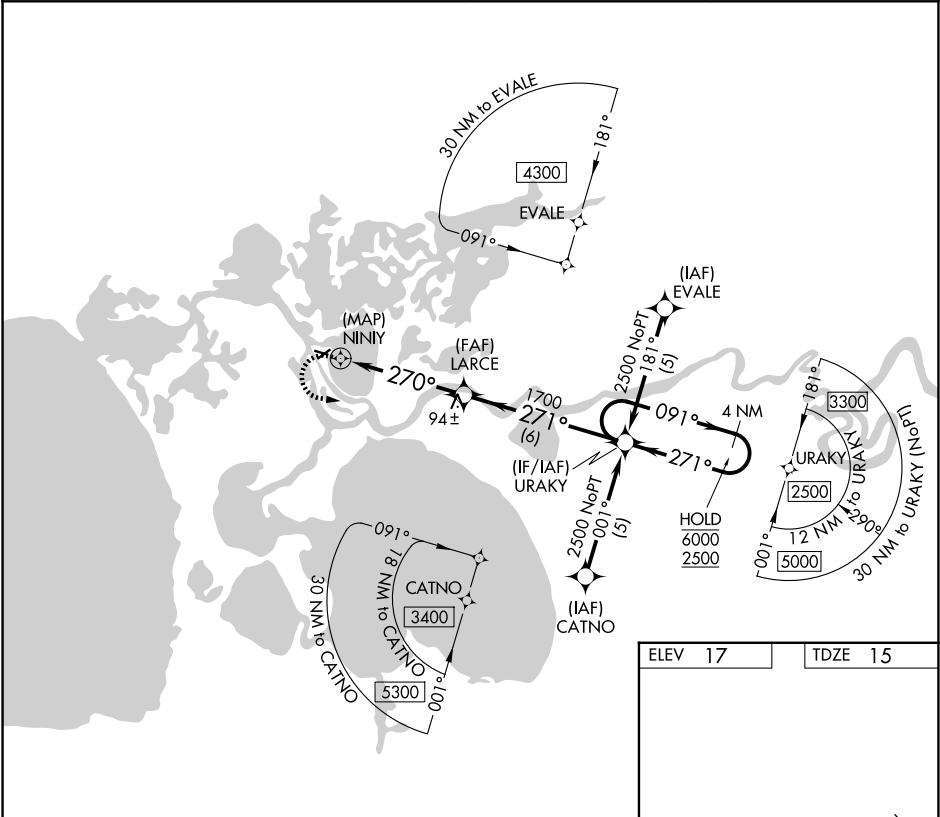
APP CRS	Rwy Ldg	2659
270°	TDZE	15
	Apt Elev	17

RNAV (GPS) RWY 27

SELAWIK (WLK) (PASK)

RNP APCH.	MISSED APPROACH: Climbing left turn to 2500 direct URAKY and hold.
▼ Rwy 27 helicopter visibility reduction below 1 SM NA. Straight-in and Circling Rwy 27 NA at night, Circling Rwy 9 NA at night.	

AWOS-3P 135.65	ANCHORAGE CENTER 119.2 263.0	KOTZEBUE RADIO 122.5	CTAF 122.7 0
-------------------	---------------------------------	-------------------------	-----------------



2500	URAKY	VGSI and descent angles not coincident (VGSI Angle 3.00/TCH 25).			
		LARCE	URAKY	4 NM Holding Pattern	
		≤ 3.04° TCH 45	271°	091° → 6000	← 271° 2500
		NINIY	1700		
		0.5	4.6 NM	6 NM	
CATEGORY	A	B	C	D	
LNNAV MDA	420-1	405 (500-1)	420-1¼	405 (500-1¼)	
CIRCLING	480-1 463 (500-1)	580-1 563 (600-1)	580-1½ 563 (600-1½)	580-2 563 (600-2)	

