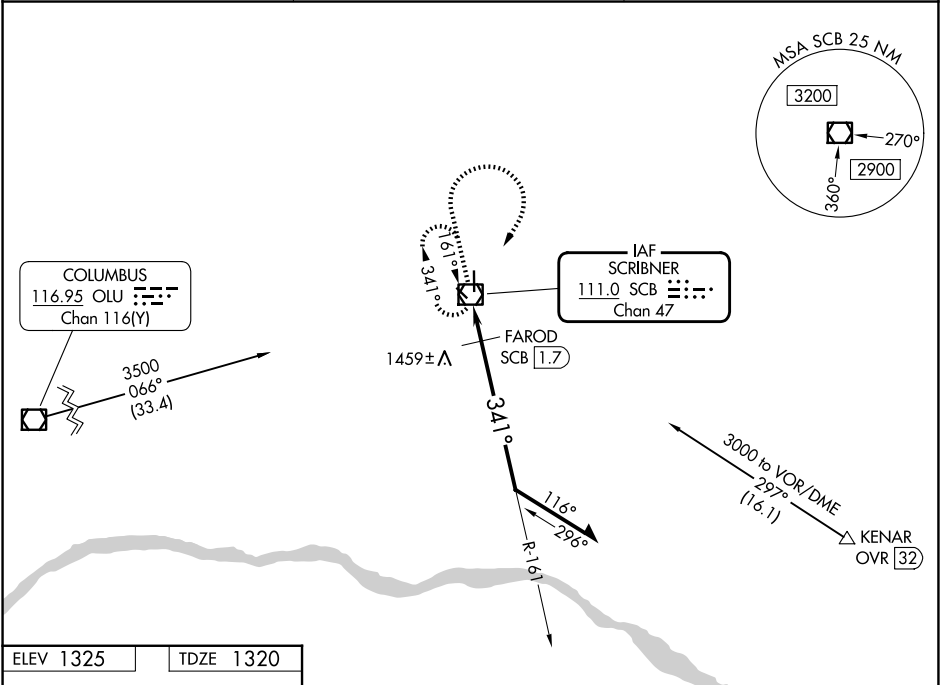


VOR/DME SCB	APP CRS	Rwy Ldg	4200
111.0	341°	TDZE	1320
Chan 47		Apt Elev	1325

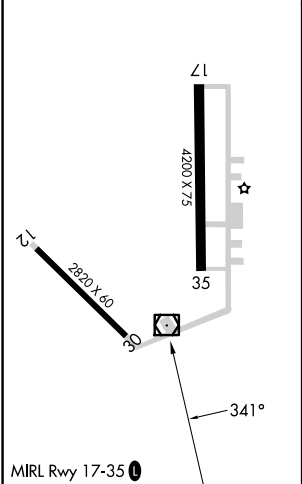
VOR RWY 35
SCRIBNER STATE (SCB)

<p>⚠ NA</p> <p>Circling Rwy 17 NA at night. Use FET altimeter setting; when not received, use AHQ altimeter setting and increase all MDAs 40 feet.</p>	<p>MISSED APPROACH: Climb to 3000 then right turn direct SCB VOR/DME and hold.</p>
--	--

FET AWOS-3 121.275	OMAHA APP CON 135.875 354.05	CTAF 122.9
-----------------------	---------------------------------	---------------



ELEV 1325	TDZE 1320
-----------	-----------



3000	SCB	161°	3000	Remain within 10 NM
3000	SCB VOR/DME	161°	3000	
1960	FAROD SCB 1.7	341°	1960	
1.7 NM	≤ 3.11°	TCH 40		
CATEGORY	A	B	C	D
S-35	1960-1	640 (700-1)		NA
CIRCLING	1960-1	635 (700-1)		NA
FAROD FIX MINIMUMS				
S-35	1800-1	480 (500-1)		NA
CIRCLING	1900-1	575 (600-1)		NA