

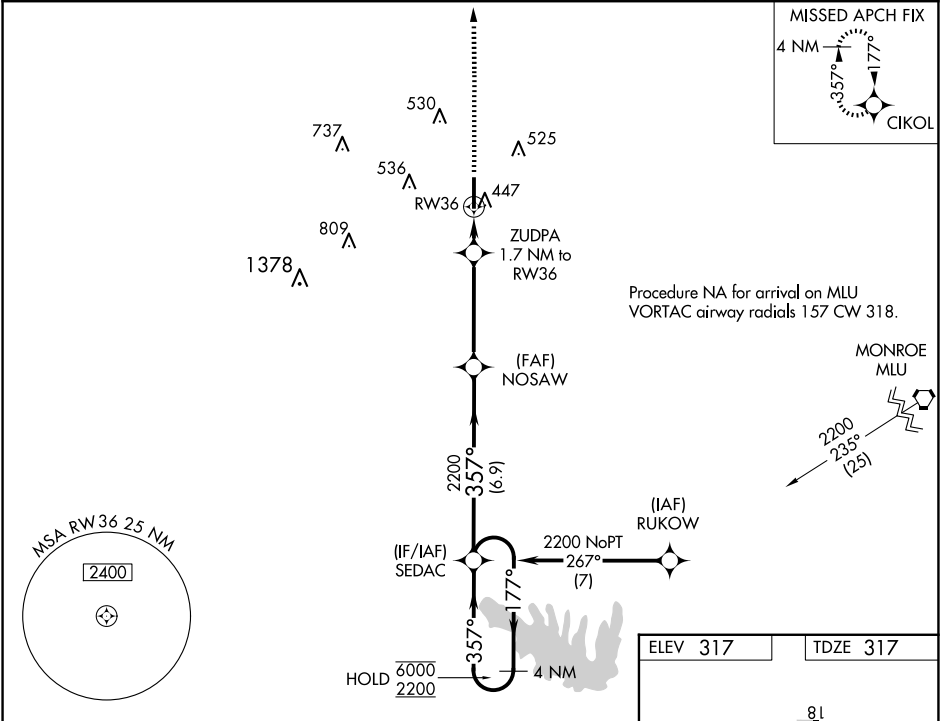
WAAS CH 86722 W36A	APP CRS 357°	Rwy Idg TDZE Apt Elev	6002 317 317
--	------------------------	-----------------------------	---



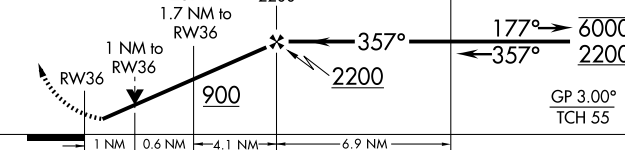
RNAV (GPS) RWY 36

RUSTON RGNL (RSN)

RNP APCH - GPS.	MISSED APPROACH: Climb to 2000 direct CIKOL and hold.
Rwy 36 helicopter visibility reduction below ¾ SM NA. For uncompensated Baro-VNAV systems, LNAV/VNAV NA below -15°C or above 54°C.	

AWOS-3PT 119.525	MONROE APP CON ★ 126.9 307.9	CLNC DEL 118.8	UNICOM 122.7 (CTAF) 0
----------------------------	--	--------------------------	---------------------------------



2000	CIKOL					
						
						
CATEGORY		A		B	C	D
LPV DA		602-¾		285 (300-¾)		
LNAV/VNAV DA		628-¾		311 (400-¾)		
LNAV MDA		700-¾ 383 (400-¾)		700-1 383 (400-1)		
CIRCLING		760-1 443 (500-1)		780-1 463 (500-1)		900-1½ 583 (600-1½) 960-2 643 (700-2)

