

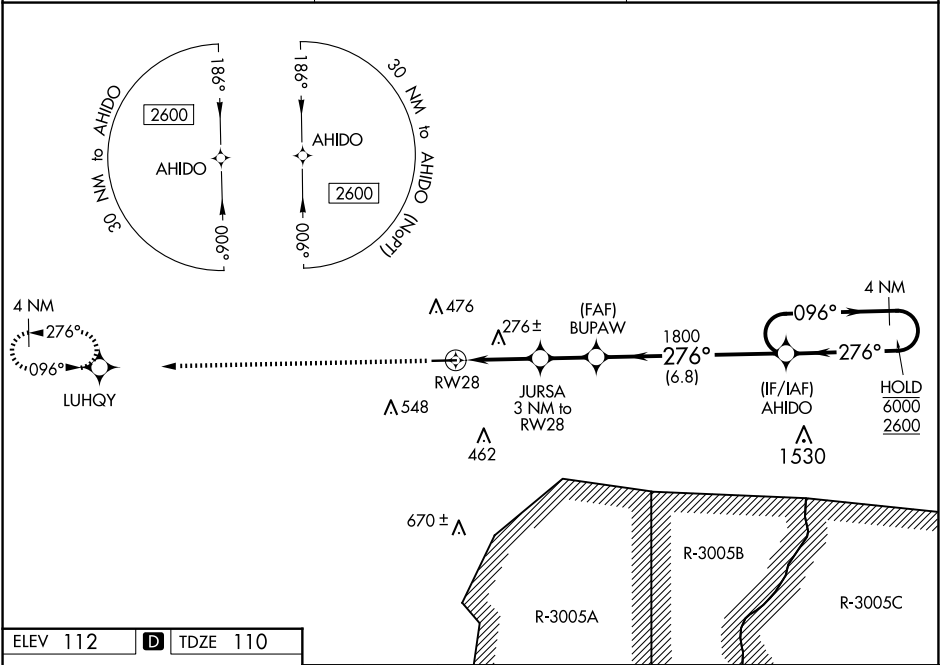
RNP APCH GPS.

▼

Rwy 28 helicopter visibility reduction below ¾ SM NA. For uncompensated Baro-VNAV systems, LNAV/VNAV NA below -15°C or above 54°C. Circling Rwy 10 NA at night.

MISSED APPROACH: Climb to 2600 direct LUHQY and hold.

AWOS-3 120.075	JACKSONVILLE CENTER 132.925 363.2	UNICOM 122.8 (CTAF) 0
--------------------------	---	--



ELEV 112	D	TDZE 110
----------	----------	----------

2600 LUHQY

↑

★

*LNAV only.

276°

0.3% UP

5151 X 75

BUPAW

JURSA 3 NM to RW28

RW28

1140*

1800

1800

276°

096°

4 NM Holding Pattern

6000

2600

GP 3.10° TCH 55

1.3

1.7 NM

2 NM

6.8 NM

CATEGORY	A	B	C	D
LPV DA	386-1	276 (300-1)		
LNAV/VNAV DA	403-1	293 (300-1)		
LNAV MDA	540-1	430 (500-1)	540-1¼	430 (500-1¼)
CIRCLING	580-1 468 (500-1)	780-1 668 (700-1)	860-2¼ 748 (800-1¼)	860-2½ 748 (800-2½)