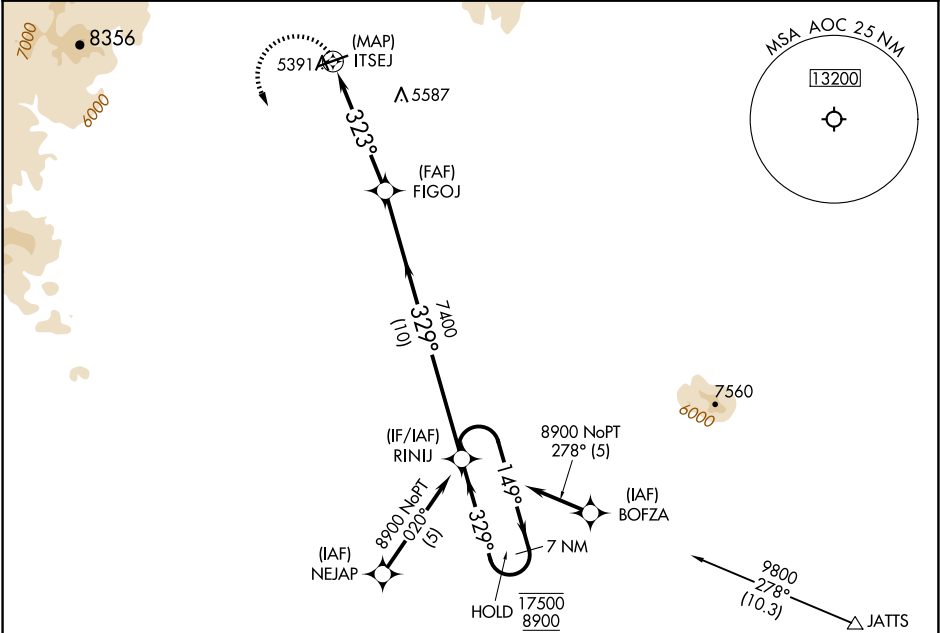


APP CRS 323°	Rwy Idg TDZE Apt Elev	N/A N/A 5335
-----------------	-----------------------------	--------------------

RNAV (GPS)-A

ARCO-BUTTE COUNTY (AOC)

RNP APCH.	MISSED APPROACH: Climbing left turn to 8900 direct RINIJ and hold, continue climb in hold to 8900.
NA Circling NA for Cats C and D northwest of Rwy 6-24. When local altimeter setting not received, use Pocatello Rgnl altimeter setting and increase all MDAs 600 feet. Increase Cat A/B visibility to 1¼ SM and Cat C visibility to 3 SM.	
SALT LAKE CENTER 128.35 239.25	UNICOM 122.8 (CTAF) 0



8900	RINIJ	FIGOJ	RINIJ	7 NM Holding Pattern	149° → 17500	← 329° 8900
BETRE		ITSEJ		5 NM 10 NM		
CATEGORY	A	B	C	D	MRL Rwy 6-24 0	
CIRCLING	5920-1	585 (600-1)	5940-1¾ 605 (700-1¾)	6680-3 1345 (1400-3)	REIL Rwy 6 and 24 0	