

WAAS CH 61137 W36A	APP CRS 001°	Rwy Idg TDZE 736 Apt Elev 738	4894 736 738
--	------------------------	---	---

RNAV (GPS) RWY 36

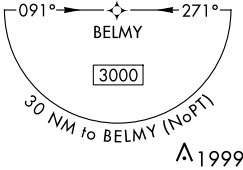
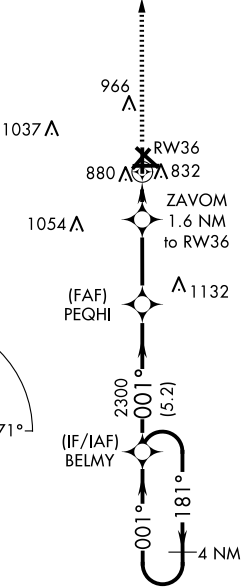
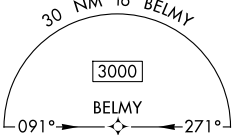
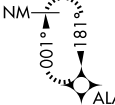
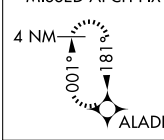
RANTOUL NTL AVN CNTR-FRANK ELLIOTT FLD (TIP)

▼ Baro-VNAV NA when using Champaign Urbana altimeter setting. For uncompensated Baro-VNAV systems, LNAV/VNAV NA below -16°C (4°F) or above 54°C (130°F). DME/DME RNP-0.3 NA. When local altimeter setting not received, use Champaign Urbana altimeter setting and increase all DA 41 feet and all MDA 60 feet; increase LNAV/VNAV all Cats visibility 1/8 mile and LNAV and Circling Cats C/D visibility 1/4 mile. Helicopter visibility reduction below 3/4 SM NA.

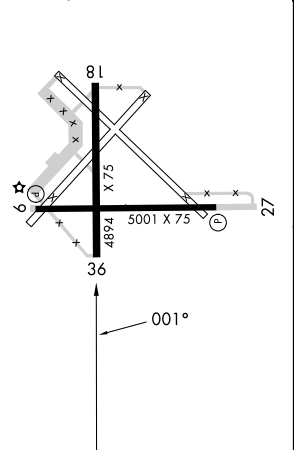
MISSED APPROACH:
Climb to 3000 direct
ALADE and hold.

AWOS-3 119.025	CHAMPAIGN APP CON ★ 121.35 285.65	UNICOM 123.0 (CTAF) ①
--------------------------	---	---------------------------------

MISSED APCH FIX



ELEV 738	TDZE 736
REIL Rwy 9 and 27 ①	MIRL Rwy 9-27 and 18-36 ②



<div>3000 ↑</div>		<div>ALADE ✧</div>		<div>BELMY 4 NM Holding Pattern</div>	
<div>*LNAV only</div>		<div>ZAVOM 1.6 NM to RW36</div>		<div>PEQHI 2300</div>	
<div>RW36 ↙</div>		<div>1280*</div>		<div>001° 2300</div>	
<div>1.6 NM</div>		<div>3.2 NM</div>		<div>5.2 NM</div>	
<div>CATEGORY</div>		<div>A</div>		<div>B</div>	
<div>LPV DA</div>		<div>986-1</div>		<div>250 (300-1)</div>	
<div>LNAV/ VNAV DA</div>		<div>1147-1³/₈</div>		<div>411 (500-1³/₈)</div>	
<div>LNAV MDA</div>		<div>1140-1</div>		<div>404 (500-1)</div>	
<div>1220-1 482 (500-1)</div>		<div>1280-1 542 (600-1)</div>		<div>1380-1³/₄ 642 (700-1³/₄)</div>	
<div>1420-2¹/₄ 682 (700-2¹/₄)</div>		<div>GP 3.00° TCH 40</div>			