

WAAS CH <b>90239</b> <b>W18A</b>	APP CRS <b>181°</b>	Rwy Idg <b>4894</b> TDZE <b>738</b> Apt Elev <b>738</b>
--	------------------------	---

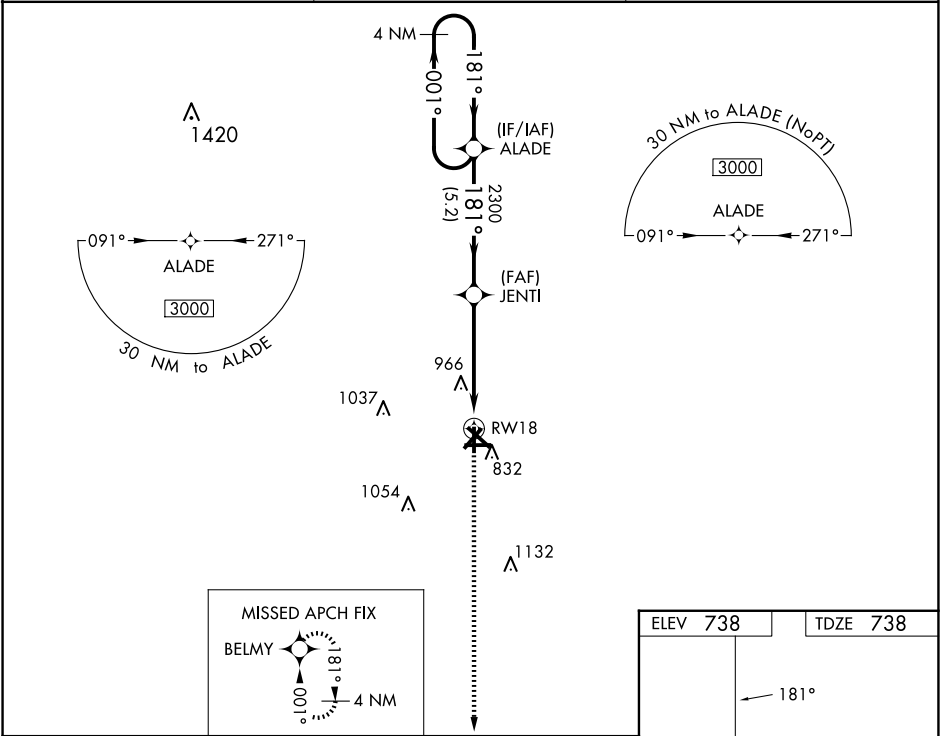
RNAV (GPS) RWY 18

RANTOUL NTL AVN CNTR-FRANK ELLIOTT FLD (TIP)

▼ For uncompensated Baro-VNAV systems, LNAV/VNAV NA below -16°C (4°F) or above 54°C (130°F). Baro-VNAV and VDP NA when using Champaign Urbana altimeter setting. DME/DME RNP-0.3 NA. Helicopter visibility reduction below ¼ SM NA. When local altimeter setting not received, use Champaign Urbana altimeter setting and increase LPV DA to 1056 and all visibilities to 1½ mile, increase LNAV/VNAV DA to 1312 and all visibilities to 2 mile: increase all MDA 60 feet; increase LNAV and Circling Cats C/D visibility ¼ mile.

▲ MISSED APPROACH: Climb to 3000 direct BELMY and hold.

AWOS-3 <b>119.025</b>	CHAMPAIGN APP CON ★ <b>121.35 285.65</b>	UNICOM <b>123.0 (CTAF) 0</b>
--------------------------	---	---------------------------------



4 NM Holding Pattern		ALADE		JENTI		3000		BELMY	
3000		← 001° 181° →		181°		2300		* 1.6 NM to RW18 * LNAV only.	
GP 3.00° TCH 40				2300				RW18	
		5.2 NM		3.2 NM		1.6 NM			
CATEGORY	A	B		C		D			
LPV DA	1015-1		277 (300-1)						
LNAV/ VNAV	DA	1271-178		533 (600-178)					
LNAV MDA	1280-1	542 (600-1)		1280-158		542 (600-158)			
CIRCLING	1280-1	542 (600-1)		1380-134 642 (700-134)		1420-214 682 (700-214)			

EC-3, 07 AUG 2025 to 04 SEP 2025

EC-3, 07 AUG 2025 to 04 SEP 2025