

WAAS CH 72740 W29A	APP CRS 290°	Rwy Idg TDZE Apt Elev	6300 4855 4874
--	------------------------	-----------------------------	---

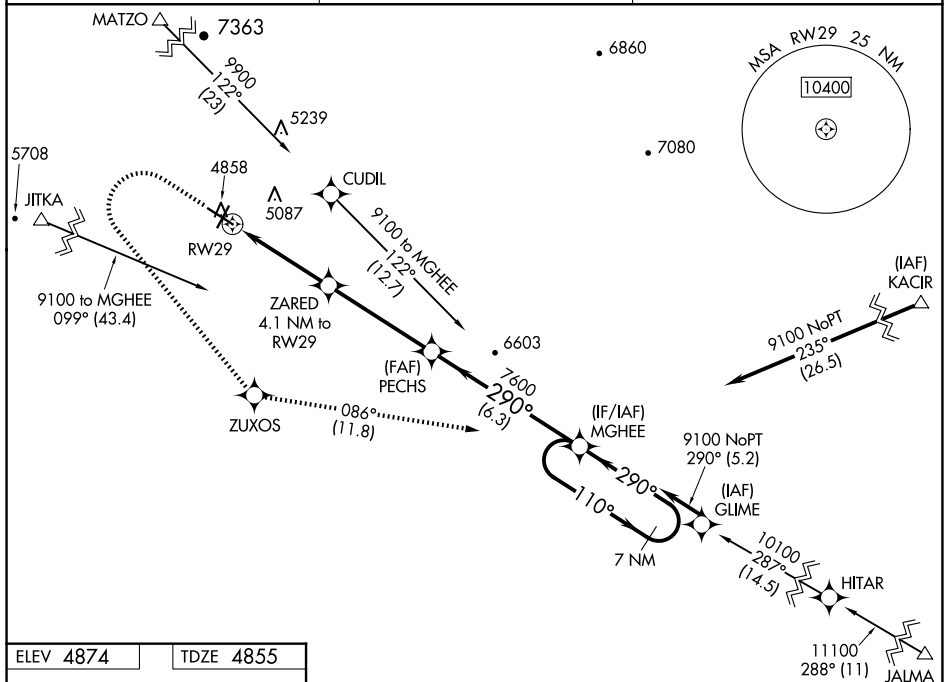
RNAV (GPS) RWY 29
COLORADO CITY MUNI (AZC)

RNP APCH.

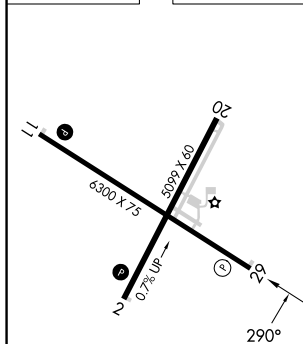
T Baro-VNAV NA. Circling NA for Cat D north of Rwy 11-29.
A

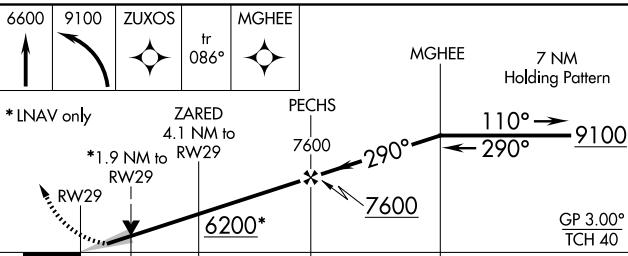

MISSED APPROACH: Climb to 6600 then climbing left turn to 9100 direct ZUXOS and track 086° to MGHEE and hold.

AWOS-3PT 118.375	LOS ANGELES CENTER 124.2 343.6	UNICOM 122.7 (CTAF) 0
----------------------------	--	---------------------------------



ELEV 4874		TDZE 4855
-----------	--	-----------



6600 ↑	9100 ↖	ZUXOS ✧	tr 086°	MGHEE ✧					
* LNAV only					ZARED 4.1 NM to RW29				
* 1.9 NM to RW29					PECHS 7600				
6200*					7600				
1.9 NM					2.2 NM				
4.4 NM					6.3 NM				
MGHEE					7 NM Holding Pattern				
110° →					9100				
← 290°					GP 3.00° TCH 40				
CATEGORY		A		B		C		D	
LPV	DA	5105-1		250 (300-1)					
LNAV/ VNAV	DA	5157-1		302 (300-1)					
LNAV	MDA	5500-1 645 (700-1)		5500-1 $\frac{7}{8}$ 645 (700-1 $\frac{7}{8}$)					
 CIRCLING		5500-1 626 (700-1)		5520-1 646 (700-1)		6880-3		2006 (2100-3)	