

WAAS CH <b>86440</b> <b>W11A</b>	APP CRS <b>109°</b>	Rwy Idg TDZE <b>4854</b> Apt Elev <b>4874</b>
--	------------------------	---

RNAV (GPS) RWY 11

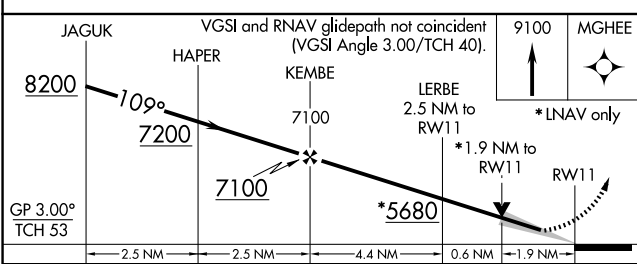
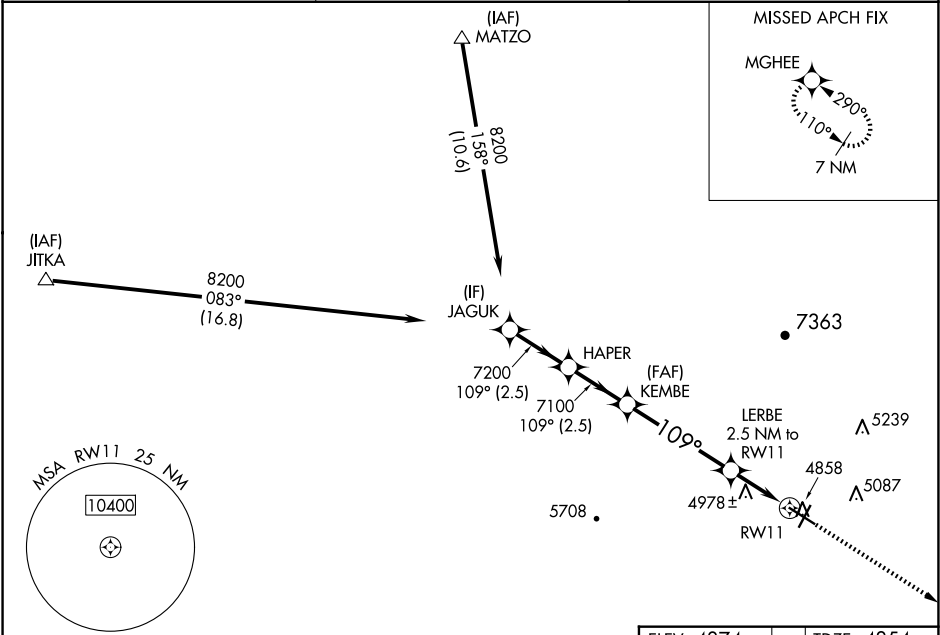
COLORADO CITY MUNI (AZC)

⚠

For uncompensated Baro-VNAV systems, LNAV/VNAV NA below -24°C (-11°F) or above 51°C (125°F). Circling NA for Cat D north of Rwy 11-29. DME/DME RNP-0.3 NA.

MISSED APPROACH: Climb to 9100 direct MGHEE and hold, continue climb-in-hold to 9100.  
#Missed approach requires minimum climb of 240 feet per NM to 7500.

AWOS-3PT <b>118.375</b>	LOS ANGELES CENTER <b>124.2 343.6</b>	UNICOM <b>122.7 (CTAF) 0</b>
----------------------------	--	---------------------------------



ELEV 4874

TDZE 4854

REIL Rwy 11 0

REIL Rwy 29

MIRL Rwy 11-29 and 2-20 0