

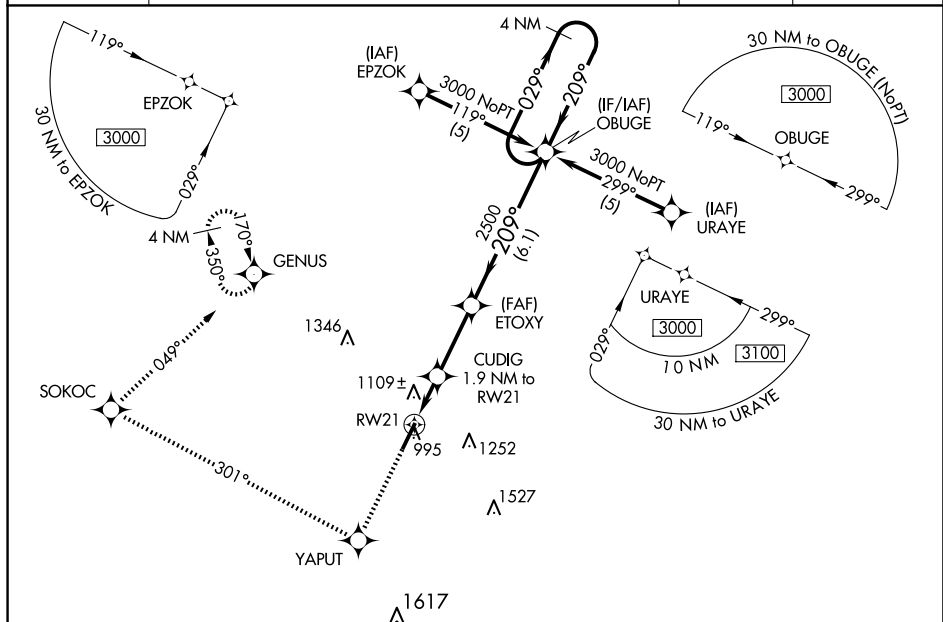
WAAS CH 48909 W21A	APP CRS 209°	Rwy Ldg 5498 TDZE 948 Apt Elev 948
--	------------------------	---

RNAV (GPS) Z RWY 21
GEORGETOWN-SCOTT COUNTY RGNL (27K)

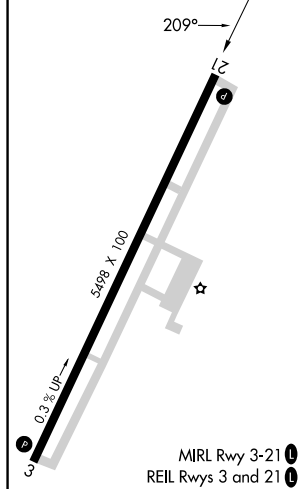
NA For uncompensated Baro-VNAV systems, LNAV/VNAV NA below -16° C (4° F) or above 46° C (114° F). DME/DME RNP-0.3 NA. When local altimeter setting not received, use Lexington altimeter setting and increase LPV DA to 1186, LNAV/VNAV DA to 1460, and all MDA 40 feet; increase LPV all Cats and LNAV Cats C/D and Circling Cat D visibility ¼ SM. Baro-VNAV and VDP NA with Lexington altimeter setting.

MISSED APPROACH: Climb to 3000
direct YAPUT and right turn on track
301° to SOKOC and right turn on
track 049° to GENUS and hold.

AWOS-3 119,975	LEXINGTON APP CON 120.15 259.3 (040° - 220°) 120.75 298.9 (221° - 039°)				CLNC DEL 127,425	UNICOM 123.0 (CTAF) 0
-------------------	--	--	--	--	---------------------	--------------------------



ELEV 948	TDZE 948
----------	----------



3000 ↑	YAPUT ✱	SOKOC ✱	GENUS ✱	4 NM Holding Pattern	
				OBUGE 029° → 3000 ← 209°	
*LNAV only. RW21 1.2 NM to RW21 CUDIG 1.9 NM to RW21 ETOXY 2500 2500 1580 1.2 NM 0.7 NM 2.8 NM 6.1 NM				GP 3.00° TCH 30	
CATEGORY	A		B	C	D
LPV DA	1148-3/4		200 (200-3/4)		
LNAV/VNAV DA	1422-1 3/4		474 (500-1 3/4)		
LNAV MDA	1360-1	412 (500-1)	1360-1 1/4	412 (500-1 1/4)	
CIRCLING	1420-1	472 (500-1)	1560-1 3/4 612 (700-1 3/4)	1660-2 1/4 712 (800-2 1/4)	

RNAV (GPS) Z RWY 21